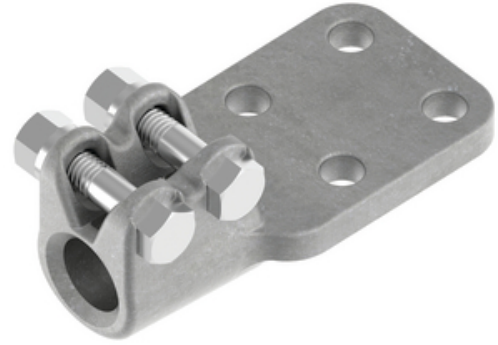


Stud Connector, Aluminum

By ANDERSON

Catalog # [ADSF201D1212](#)

Aluminum alloy stud connector is used to connect aluminum flat to aluminum or copper equipment stud.



*Representative Image

Features

- Bolted Stud to Flat Connector
- Stud Diameter/Thread: 2"-12
- 1/2 inch thick NEMA D 4-Hole Flat Pad
- Contact surfaces are finished on both sides of the pad.
- Material: Casting - 356-T6 aluminum alloy, Stud Mounting Hardware - aluminum alloy
- Clamping bolts have hex-stops for one-wrench installation.
- Contact sealant is factory installed in connector stud threads and is recommended for conductor installation.
- To specify 90 degree connector, add suffix "90" to catalog number. Example: ADSF141D389012

General

EU RoHS Indicator	No
Material	Aluminum
Material - Clamping Hardware	Aluminum Alloy
Number of Ground Braid Lug Holes	0
Number of Pad Holes	4
Number of Stud Threads	12
Type	Stud to Flat
UPC	096359282051

Dimensions

Angle - Stud to Pad	180 °
Base Hole Spacing	0 in
Diameter - Base Holes	0 in
Diameter - Bolt	0 in
Diameter - Inside	0 in
Diameter - Stud	2 in
Length - Coupling	0 in
Length Before Compression	0 in
Thickness - Pad	0.5 in
Weight	3.43 lb
Width - Pad	4 in

Electrical Ratings

Maximum Current Rating Amps 0
Continuous

Product Assets

[Catalogs - Substation Connectors \(SA\)](#)

[Sales Drawings - C-9672 \(ADSF Product Family\)](#)

[Video - Hubbell Power Systems 3D Portal to help with](#)

[developing 3D models of substation connector products](#)

[Video - Hubbell Power Systems Quick Ship](#)



A Hubbell brand

©2024 Hubbell Incorporated. All rights reserved
AN-ADSF201D1212-SPEC-EN | REV 6/2024