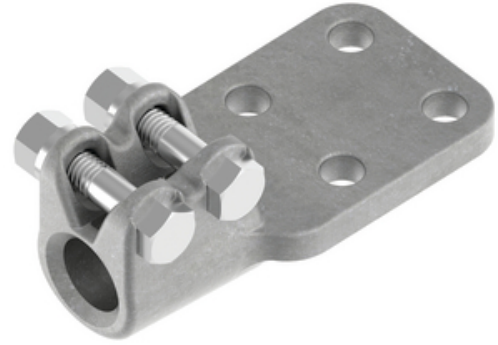


Stud Connector, Aluminum

By ANDERSON

Catalog # [ADSF201D3412](#)

Aluminum alloy stud connector is used to connect aluminum flat to aluminum or copper equipment stud.



*Representative Image

Features

- Bolted Stud to Flat Connector
- Stud Diameter/Thread: 2"-12
- 3/4 inch thick NEMA D 4-Hole Flat Pad
- Contact surfaces are finished on both sides of the pad.
- Material: Casting - 356-T6 aluminum alloy, Stud Mounting Hardware - aluminum alloy
- Clamping bolts have hex-stops for one-wrench installation.
- Contact sealant is factory installed in connector stud threads and is recommended for conductor installation.
- To specify 90 degree connector, add suffix "90" to catalog number. Example: ADSF141D389012

General

| | |
|----------------------------------|----------------|
| EU RoHS Indicator | No |
| Material | Aluminum |
| Material - Clamping Hardware | Aluminum Alloy |
| Number of Ground Braid Lug Holes | 0 |
| Number of Pad Holes | 4 |
| Number of Stud Threads | 12 |
| Type | Stud to Flat |
| UPC | 096359282075 |

Dimensions

| | |
|---------------------------|----------|
| Angle - Stud to Pad | 180 ° |
| Base Hole Spacing | 0 in |
| Diameter - Base Holes | 0 in |
| Diameter - Bolt | 0 in |
| Diameter - Inside | 0 in |
| Diameter - Stud | 2 in |
| Length - Coupling | 0 in |
| Length Before Compression | 0 in |
| Thickness - Pad | 0.75 in |
| Weight | 0.196 lb |
| Width - Pad | 4 in |

Electrical Ratings

Maximum Current Rating Amps 0
Continuous

Product Assets

[Catalogs - Substation Connectors \(SA\)](#)

[Sales Drawings - C-9672 \(ADSF Product Family\)](#)

[Video - Hubbell Power Systems 3D Portal to help with](#)

[developing 3D models of substation connector products](#)

[Video - Hubbell Power Systems Quick Ship](#)



A Hubbell brand

©2024 Hubbell Incorporated. All rights reserved
AN-ADSF201D3412-SPEC-EN | REV 6/2024