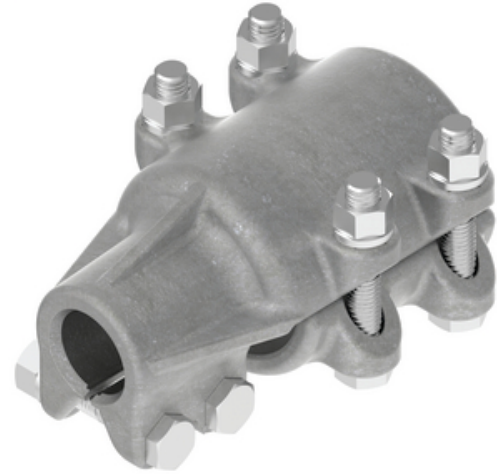


# HUBBELL Power Systems

## Stud Connector, Bolted Aluminum, Stud to Tube

By ANDERSON  
Catalog # [ADST16109012](#)

Aluminum alloy stud connector is used to connect aluminum tubing to aluminum or copper equipment stud.



\*Representative Image

### Features

- Bolted Aluminum Stud to Tube
- 90 degree
- Stud Diameter/Thread: 1-3/4"-12 to 1" IPS/EHIPS Tube
- Clamping bolts have hex-stops for one-wrench installation.
- Material: Casting - 356-T6 aluminum alloy, Hardware - aluminum alloy, Contact sealant is factory installed in connector stud threads and is recommended for conductor installation.
- To specify 90 degree connector, add "90" to catalog number. Example: ADST14209012

### General

Material	Aluminum
Material - Clamping Hardware	Aluminum Alloy
Number of Ground Braid Lug	0
Holes	
Number of Stud Threads	12
Type	Stud to Tube

### Dimensions

Angle - Stud to Conductor	90 °
Base Hole Spacing	0 in
Diameter - Base Holes	0 in
Diameter - Bolt	0 in
Diameter - Inside	0 in
Diameter - Stud	1.75 in
Length - Coupling	0 in
Length Before Compression	0 in
Weight	2 lb

### Electrical Ratings

Maximum Current Rating Amps 0  
Continuous

### Conductor Related

Conductor Type Aluminum Bus

### Product Assets

[Catalogs - Substation Connectors \(SA\)](#)  
[Video - Hubbell Power Systems 3D Portal to help with developing 3D models of substation connector products](#)  
[Video - Hubbell Power Systems Quick Ship](#)



A Hubbell brand

©2024 Hubbell Incorporated. All rights reserved  
AN-ADST16109012-SPEC-EN | REV 6/2024