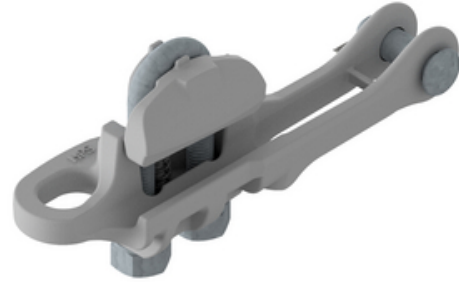


HUBBELL

Power Systems

Deadend, Straight line, Spring Loaded, Side opening, 336.4 (19 STR) - 1200 (91 STR) AL, 336.4 (18/1) - 1113 (45/7) ACSR

By ANDERSON
Catalog # [ASOD12592N](#)



Deadend, Straight line, Spring Loaded, Side opening, 336.4 (19 STR) - 1200 (91 STR) AL, 336.4 (18/1) - 1113 (45/7) ACSR, Conductor Range 0.67 - 1.263 in, Fitting: None.

*Representative Image

Features

- Spring Loaded Vertical Keeper for Easy Installation
- Add "S" for socket or "C" for clevis fitting options

General

Fitting Type	None
Material	Aluminum Alloy; Steel
Material - Body	356 T6 Aluminum Alloy
Material - Bolt	Galvanized Steel
Material - Hardware	Galvanized Steel
Material - Keeper	356 T6 Aluminum Alloy
Product Category	Straight Line
Strength Rating - Ultimate Body	15000 lb
Style	ASOD
Type	Bolted
U-Bolts	2
UPC	096359612636

Dimensions

Diameter - Bolt	0.5 in
Diameter - Pin	0.625 in
Weight	3.99 lb

Conductor Related

Conductor Diameter - Maximum	1.263
Conductor Diameter - Minimum	0.66
Conductor Diameter Range	0.66 - 1.263

Logistics

Pallet Quantity 320

Product Assets

[Catalog Page - ASOD Catalog Page](#)
[Catalogs - Distribution Connectors](#)
[Installation Manuals - ASOD_install instructions](#)
[Literature - Ropes Course Industry Letter \(April 2021\)](#)
[Literature - Deadends For Overhead Connections](#)
[Sales Drawings - AL, Side Opening Deadend Clamp \(CC-17236\)](#)



A Hubbell brand

©2024 Hubbell Incorporated. All rights reserved
AN-ASOD12592N-SPEC-EN | REV 6/2024