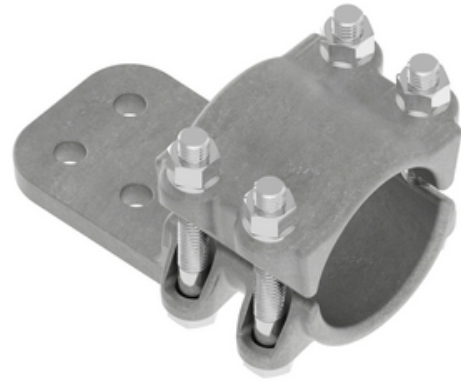


Terminal, Aluminum Bolted

By ANDERSON
Catalog # [ASTF30C](#)

Aluminum alloy terminal for connecting aluminum tubing to aluminum or copper flat pad combinations. Side formed tongues are standard to allow clearance for flush mounting. Clamping bolts will have hex stops for one wrench installation. Tongue holes have NEMA spacing. Contact sealant is recommended.



*Representative Image

Features

- Bolted tube to flat
- Tube size 3" IPS pad: 4 hole, 3 in
- Material: Castings-Aluminum alloy, Factory formed laminated shunts-Aluminum, Clamping hardware-Aluminum alloy

General

Material	Aluminum
Material - Clamping Hardware	Aluminum Alloy
Number of Bolt Holes	4
Number of Pad Holes	4
Type	Bolted Lugs & Terminals
UPC	096359286196

Dimensions

Angle - Pad	180 °
Diameter - Rod / Tube	3 in
Weight	4.214 lb
Width - Pad	3 in

Conductor Related

Conductor Type	Aluminum Bus
----------------	--------------

Logistics

Pallet Quantity	162
-----------------	-----

Product Assets

- [Catalogs - Substation Connectors \(SA\)](#)
- [Video - Hubbell Power Systems 3D Portal to help with developing 3D models of substation connector products](#)
- [Video - Hubbell Power Systems Quick Ship](#)