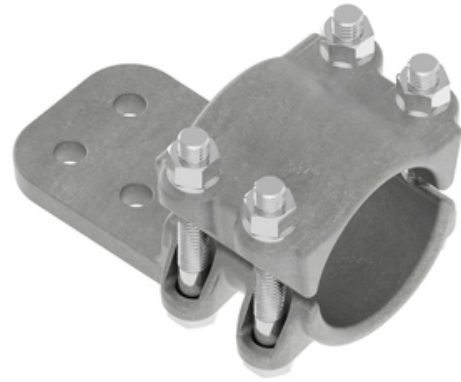


## Terminal, Aluminum Bolted

By ANDERSON  
Catalog # [ASTF30D](#)



Aluminum alloy terminal for connecting aluminum tubing to aluminum or copper flat pad combinations. Side formed tongues are standard to allow clearance for flush mounting. Clamping bolts will have hex stops for one wrench installation. Tongue holes have NEMA spacing. Contact sealant is recommended.

### Features

- Bolted tube to flat
- Tube size 3 IPS pad: 4 hole, 4 in
- Material: Castings-Aluminum alloy, Factory formed laminated shunts-Aluminum, Clamping hardware-Aluminum alloy

### General

EU RoHS Indicator	No
Material	Aluminum
Material - Clamping Hardware	Aluminum Alloy
Number of Bolt Holes	4
Number of Pad Holes	4
Type	Bolted Lugs & Terminals
UPC	096359286226

### Dimensions

Angle - Pad	180 °
Diameter - Rod / Tube	3 in
Weight	4.606 lb
Width - Pad	4 in

### Conductor Related

Conductor Type	Aluminum Bus
----------------	--------------

### Product Assets

- [Catalogs - Substation Connectors \(SA\)](#)
- [Sales Drawings - C-1660 \(ASTF Product Family\)](#)
- [Video - Hubbell Power Systems 3D Portal to help with developing 3D models of substation connector products](#)
- [Video - Hubbell Power Systems Quick Ship](#)