

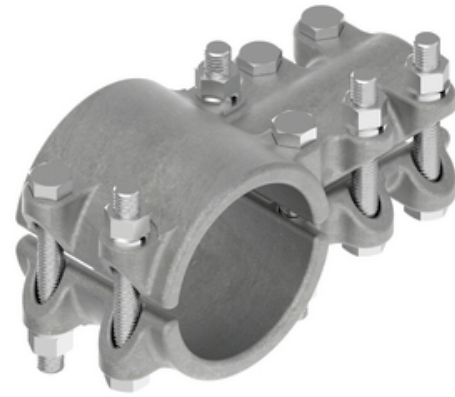
# HUBBELL

## Power Systems

### Tee, Aluminum Bolted

By ANDERSON  
Catalog # [ATTH1212](#)

Aluminum alloy, tubing to tubing, tee for connecting aluminum-aluminum or aluminum-copper conductor combinations. Clamping bolts have hex stops for one wrench installation. Contact sealant is recommended.



\*Representative Image

#### Features

- Tubing Main to Tubing Tap, Tubing Main-IPS/EHIPS-3-1/2", Tubing Tap-IPS/EHIPS -3-1/2"
- Material: Castings- Aluminum Alloy, Clamping Hardware- Aluminum Alloy"

#### General

EU RoHS Indicator	No
Material	Aluminum
Material - Clamping Hardware	Aluminum Alloy
Number of Ground Braid Lug	0
Holes	
Type	Tee, Bolted
UPC	096359288992

#### Dimensions

Base Hole Spacing	0 in
Diameter - Base Holes	0 in
Diameter - Bolt	0 in
Diameter - Inside	0 in
Length - Coupling	0 in
Length Before Compression	0 in
Weight	2.548 lb

#### Electrical Ratings

Maximum Current Rating Amps 0  
Continuous

#### Conductor Related

Conductor Type Aluminum Bus

#### Product Assets

- [Catalogs - Substation Connectors \(SA\)](#)
- [Sales Drawings - C-1589 \(ATTH Product Family\)](#)
- [Video - Hubbell Power Systems 3D Portal to help with developing 3D models of substation connector products](#)
- [Video - Hubbell Power Systems Quick Ship](#)



A Hubbell brand