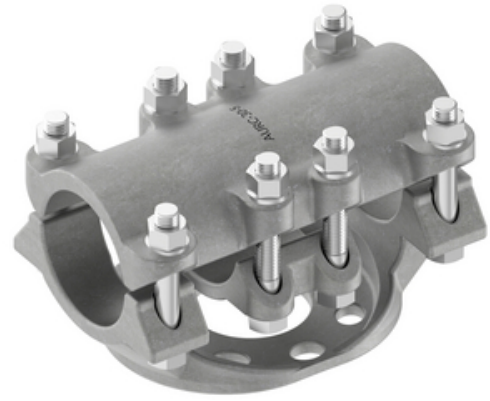


HUBBELL Power Systems

Bus Support, Coupler, Aluminum Bolted

By ANDERSON
Catalog # [AURC403](#)

Aluminum alloy, rigid clamping bus support-coupler for aluminum tubing. Clamping bolts have hex stops for one wrench installation. Cap screws are supplied for upright mounting.



*Representative Image

Features

- 4 IPS/EHIPS Tube to Insulator, 3 in BC
- Material: Castings - 356-T6 aluminum alloy, Clamping hardware - aluminum alloy, Mounting hardware - galvanized steel
- lock washers and flat washers provided to mount to insulator.

General

EU RoHS Indicator	No
Material	Aluminum
Material - Clamping Hardware	Aluminum Alloy
Material - Mounting Hardware	Galvanized Steel
Number of Ground Braid Lug	0
Holes	
Type	Tube to Insulator
UPC	096359290018

Dimensions

Base Hole Spacing	0 in
Diameter - Base Holes	0 in
Diameter - Bolt	0 in
Diameter - Bolt Circle	3 in
Diameter - Inside	0 in
Length - Coupling	0 in
Length Before Compression	0 in
Weight	10.584 lb

Electrical Ratings

Maximum Current Rating Amps 0
Continuous

Conductor Related

Conductor Type Aluminum Bus

Product Assets

[Catalogs - Substation Connectors \(SA\)](#)
[Sales Drawings - C-4244 \(AURC Product Family\)](#)
[Video - Hubbell Power Systems 3D Portal to help with developing 3D models of substation connector products](#)
[Video - Hubbell Power Systems Quick Ship](#)



A Hubbell brand

©2024 Hubbell Incorporated. All rights reserved
AN-AURC403-SPEC-EN | REV 6/2024