

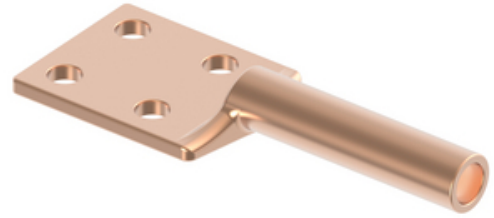
HUBBELL

Power Systems

Terminal, Copper Compression

By ANDERSON
Catalog # [BCL018B](#)

Heavy duty, copper compression terminal for connecting copper cable to copper flat pad. Pad holes have Nema spacing.



*Representative Image

Features

- Cable to Flat, cable: #2 Str. 0.292 dia., pad: 2 hole, 1.5 in
- Heavy duty
- For use with conventional compression tooling
- 90° pad orientation available, 45° pad orientation available
- Material: Copper

General

EU RoHS Indicator	No
Material	Copper
Number of Bolt Holes	2
Number of Ground Braid Lug Holes	0
Number of Pad Holes	2
Type	Bolted Lugs & Terminals
UPC	096359291220

Dimensions

Angle - Pad	180 °
Base Hole Spacing	0 in
Diameter - Base Holes	0 in
Diameter - Bolt	0 in
Diameter - Inside	0 in
Length - Coupling	0 in
Length Before Compression	0 in
Weight	0.98 lb
Width - Pad	1.5 in

Electrical Ratings

Maximum Current Rating Amps 0
Continuous

Conductor Related

Conductor Diameter - Maximum	0.292 in
Conductor Diameter - Minimum	0.292 in
Conductor Diameter Range	0.292 - 0.292
Conductor Type	Copper

Product Assets

[Catalogs - Substation Connectors \(SA\)](#)
[Sales Drawings - C-4402 \(BCL Product Family\)](#)
[Video - Hubbell Power Systems 3D Portal to help with developing 3D models of substation connector products](#)
[Video - Hubbell Power Systems Quick Ship](#)



A Hubbell brand

©2024 Hubbell Incorporated. All rights reserved
AN-BCL018B-SPEC-EN | REV 6/2024