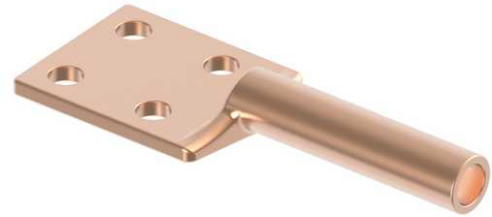


## Terminal, Copper Compression

By ANDERSON  
Catalog # [BCL025B](#)

"Transition Plate, Bi-Metallic, Thickness 1/16", For 4-holes 3" x 3"  
NEMA pads, Material: 80% aluminum, 20% copper"



\*Representative Image

### Features

- "Heavy duty
- For use with conventional compression tooling
- 90° pad orientation available, 45° pad orientation available"

### General

EU RoHS Indicator	No
Material	Copper
Number of Bolt Holes	2
Number of Pad Holes	2
Type	Bolted Lugs & Terminals
UPC	096359291336

### Dimensions

Angle - Pad	180 °
Weight	1.372 lb
Width - Pad	1.5 in

### Conductor Related

Conductor Diameter - Maximum	0.575 in
Conductor Diameter - Minimum	0.575 in
Conductor Diameter Range	0.575 - 0.575
Conductor Type	Copper

### Product Assets

[Catalogs - Substation Connectors \(SA\)](#)

[Sales Drawings - C-4402 \(BCL Product Family\)](#)

[Video - Hubbell Power Systems 3D Portal to help with developing 3D models of substation connector products \(VI05050E0619\)](#)

[Video - Hubbell Power Systems Quick Ship \(VI05124E1018\)](#)