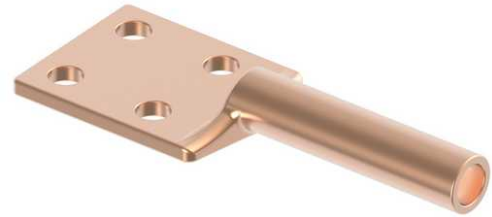


Terminal, Copper Compression

By ANDERSON
Catalog # [BCL075D](#)

"The THCSA (EHV) is a bolted aluminum trunnion suspension clamp designed to provide enhanced conductor support and protection. The THCSA (EHV) combines a cast aluminum clamp assembly with helical aluminum alloy rod sets and EPDM rubber inserts. The rubber inserts are assembled directly onto the conductor and are held in place with helical rods. The clamp assembly is then bolted around the helical wrapped rubber supporting inserts to complete the trunnion install. Material: Clamp Body-Aluminum Alloy, Rubber Insert-EPDM Rubber, Helical Rods-Aluminum Alloy, Clamping Range: 0.595"-0.606" & Helical Rod Color Code-Orange, 11 Rods Per Set"



*Representative Image

Features

- "Heavy duty
- For use with conventional compression tooling
- 90° pad orientation available, 45° pad orientation available"

General

EU RoHS Indicator	No
Material	Copper
Number of Bolt Holes	4
Number of Pad Holes	4
Type	Bolted Lugs & Terminals
UPC	096359291466

Dimensions

Angle - Pad	180 °
Weight	6.076 lb
Width - Pad	4 in

Conductor Related

Conductor Diameter - Maximum	0.998 in
Conductor Diameter - Minimum	0.998 in
Conductor Diameter Range	0.998 - 0.998
Conductor Type	Copper

Product Assets

- [Catalogs - Substation Connectors \(SA\)](#)
- [Sales Drawings - C-4402 \(BCL Product Family\)](#)
- [Video - Hubbell Power Systems 3D Portal to help with developing 3D models of substation connector products \(VI05050E0619\)](#)
- [Video - Hubbell Power Systems Quick Ship \(VI05124E1018\)](#)