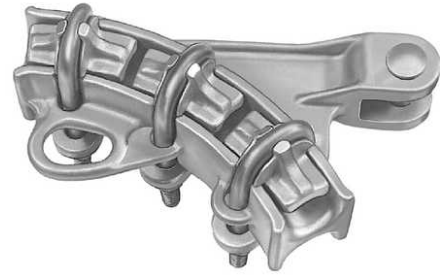


Quadrant Strain Clamp - Dual Copper Substation Cable Bus

By ANDERSON
Catalog # BR2050S



*Representative Image

"The SWHCSA is a bolted aluminum suspension clamp. It is designed to provide enhanced conductor support and protection. The SWHCSA combines a cast aluminum clamp assembly with helical aluminum alloy rod sets and EPDM rubber inserts. The rubber inserts are assembled directly onto the conductor and are held in place with helical rods. The clamp assembly is then bolted around the helical wrapped rubber supporting inserts to complete the install. Material: Clamp Body & Strap-Aluminum Alloy, Rubber Insert-EPDM Rubber, Helical Rods-Aluminum Alloy, Clamping Range-0.451"-0.470" & Helical Rod Color Code-Green, 11 Rods Per Set"

Features

- "Type BR2 is designed for dual cable
- The Sag Eye Ultimate Strength is 60% of the Ultimate Body Strength without fitting
- Rated slip strength as a % of conductor RBS varies with conductor type, size, and stranding. Minimum slip strength rating on standard strength conductors is 40% RBS (Partial Tension). For many standard strength conductors, minimum slip strength of this clamp series is 60% RBS (Normal Tension). Consult factory for slip strength test data on specific clamp and conductor combinations
- Bolt and Nut may be substituted for clevis pin by adding suffix "BNK" to catalog number. Example: BR2050SBNK
- Bolt and clevis pin will be the same diameter
- The "S" suffix indicates the component will come supplied with socket eye SA06"

General

Bolt Installation Torque (Recommended)	480 in-lbs
EU RoHS Indicator	No
Fitting Type	Socket
Material - Body	Bronze Alloy
Material - Hardware	Galvanized Steel
Material - Keeper	High Strength Bronze
Material - Pin (Cotter)	Stainless Steel
Material - Socket and Clevis	Galvanized Ductile Iron
Product Category	Quadrant
Strength Rating - Ultimate Body	10000 lb
Style	BR2
Type	Bolted Quadrant Deadend
U-Bolts	3 in
UPC	096359292302

Dimensions

Clamping - Maximum	0.813 in
Clamping - Minimum	0.574 in
Clevis Opening	0.9375 in
Diameter - Clevis Pin	0.625 in
Dimensions	8.75 in x 0.88 in x 3.25 in
Height	3.25 in
Length	8.75 in
Weight	11.3 lb
Width	0.88 in

Electrical Ratings

Voltage Application	Standard
---------------------	----------

Conductor Related

Clamping Range	0.574- 0.813
----------------	--------------

Certifications and Compliance

Industry Standard(s)	ANSI C119.4
----------------------	-------------

Logistics

Pallet Quantity	81
-----------------	----

Product Assets

[Catalogs - Transmission Connectors Catalog - Full \(CA05063E\)](#)
[Literature - Ropes Course Industry Letter \(April 2021\)](#)
[Video - Bolted Deadend \(VI05055E0621\)](#)

