

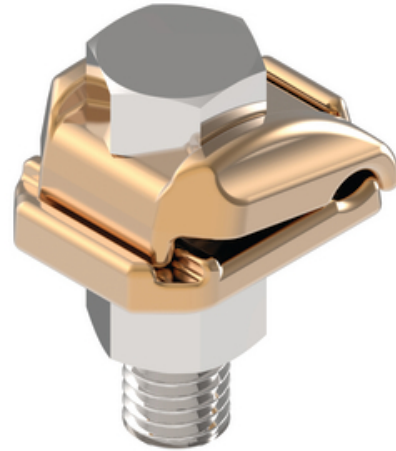
HUBBELL

Power Systems

Grounding Clamp

By ANDERSON
Catalog # [GC14101](#)

Bronze alloy ground clamping a copper cable to flat bar. Cable groove in bottom piece prevents excessive cable distortion



Features

- Bolts furnished are for clamping to 1/4" flat bar
- Everdur hardware supplied by adding Suffix ED
- If longer bolts are required, add bar thickness to catalog number. Example: GC1410112 for 1/2" bar

General

Bolt Installation Torque (Recommended)	0 ft-lbs
Catalog Number	GC14101
Material	Bronze
Material - Clamping Hardware	Stainless Steel
Material - Hardware	Stainless Steel
UPC	096359346494

Dimensions

Dimensions	1.563 in x 1.25 in x 2 in
Height	2 in
Length	1.563 in
Weight	0.4 lb
Width	1.25 in

Conductor Related

Conductor Diameter - Maximum	0.419 in
Conductor Diameter - Minimum	0.162 in
Conductor Diameter Range	0.162 - 0.419
Conductor Type	Copper

Logistics

Pallet Quantity	5040
-----------------	------

Product Assets

[Catalogs - Substation Connectors Combined](#)
[Sales Drawings - C-2564](#)
[Video - Hubbell Power Systems 3D Portal to help with developing 3D models of substation connector products](#)
[Video - Hubbell Power Systems Quick Ship](#)



A Hubbell brand