

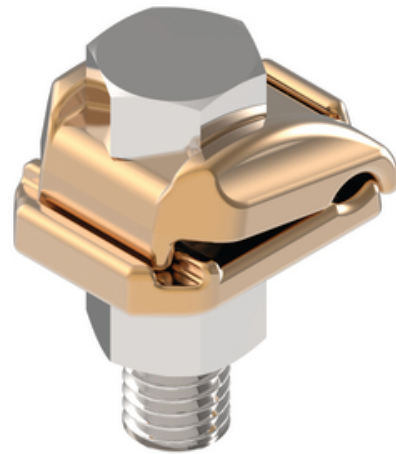
HUBBELL

Power Systems

Grounding Clamp

By ANDERSON
Catalog # [GC14103](#)

Bronze alloy ground clamping a copper cable to flat bar. Cable groove in bottom piece prevents excessive cable distortion



*Representative Image

Features

- Bolts furnished are for clamping to 1/4" flat bar
- Everdur hardware supplied by adding Suffix ED
- If longer bolts are required, add bar thickness to catalog number. Example: GC1410312 for 1/2" bar

General

Bolt Installation Torque (Recommended)	0 ft-lbs
Catalog Number	GC14103
Material	Bronze
Material - Clamping Hardware	Stainless Steel
Material - Hardware	Stainless Steel
UPC	096359306597

Dimensions

Dimensions	2.5 in x 2 in x 2.375 in
Height	2.375 in
Length	2.5 in
Weight	0.964 lb
Width	2 in

Conductor Related

Conductor Diameter - Maximum	0.813 in
Conductor Diameter - Minimum	0.629 in
Conductor Diameter Range	0.629 - 0.813
Conductor Type	Copper

Logistics

Pallet Quantity	2016
-----------------	------

Product Assets

- [Catalogs - Substation Connectors Combined](#)
- [Sales Drawings - C-2564](#)
- [Video - Hubbell Power Systems 3D Portal to help with developing 3D models of substation connector products](#)
- [Video - Hubbell Power Systems Quick Ship](#)



A Hubbell brand