

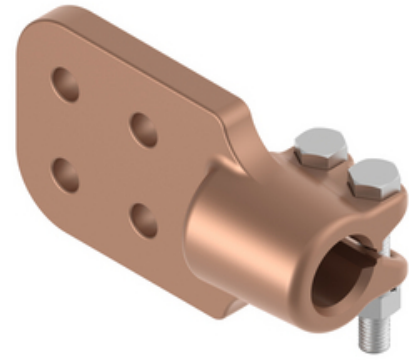
HUBBELL Power Systems

Stud Connector, Bronze

By ANDERSON

Catalog # [HDSF201D1212TP](#)

Bronze alloy stud connector for connecting copper flat pad to copper stud. Tongue holes have NEMA hole spacing with contact surface on both sides. Material: casting - bronze alloy, hardware - silicon bronze or stainless steel. To specify 90 deg connector, insert "90" into catalog number. Example: HDSF141338B9012.



*Representative Image

Features

"To specify 90 degree connector, add "90" to catalog number. Example: HDSF201D129012TP"

General

Material	Bronze
Material - Clamping Hardware	Stainless Steel
Number of Ground Braid Lug Holes	0
Number of Pad Holes	4
Number of Stud Threads	12
Type	Stud to Flat
UPC	096359316077

Dimensions

Angle - Stud to Pad	180 °
Base Hole Spacing	0 in
Diameter - Base Holes	0 in
Diameter - Bolt	0 in
Diameter - Inside	0 in
Diameter - Stud	2 in
Dimensions	4 in x 7.25 in x 0.5 in
Height	0.5 in
Length	4 in
Length - Coupling	0 in
Length Before Compression	0 in
Weight	5.88 lb
Width	7.25 in
Width - Pad	4 in

Electrical Ratings

Maximum Current Rating Amps 0
Continuous

Product Assets

[Catalogs - Substation Connectors \(SA\)](#)

[Sales Drawings - CC-12926](#)

[Video - Hubbell Power Systems 3D Portal to help with developing 3D models of substation connector products](#)

[Video - Hubbell Power Systems Quick Ship](#)

