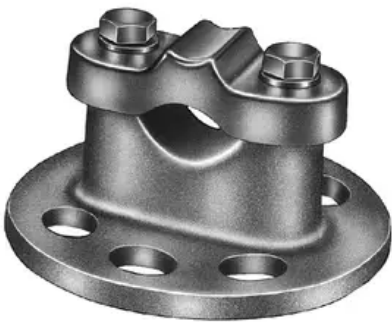


Bus Support, Bronze Bolted

By ANDERSON
Catalog # [ICA1003](#)

Bronze alloy bus support for copper cable or tubing



*Representative Image

Features

Four Galv-Steel HH Bolts, lock washers and flat washers provided to mount to insulator cap

General

Catalog Number	ICA1003
Material	Bronze
Material - Clamping Hardware	Silicon Bronze
Material - Mounting Hardware	Galvanized Steel
Number of Ground Braid Lug Holes	0
Type	Bus Support, Cable or Tube to Insulator
UPC	096359317784

Dimensions

Base Hole Spacing	0 in
Diameter - Base Holes	0 in
Diameter - Bolt	0 in
Diameter - Bolt Circle	3 in
Diameter - Inside	0 in
Length - Coupling	0 in
Length Before Compression	0 in

Weight 2.45 lb

Electrical Ratings

Maximum Current Rating Amps 0
Continuous

Conductor Related

Conductor Diameter - Maximum	1.152 in
Conductor Diameter - Minimum	0.46 in
Conductor Diameter Range	0.46 - 1.152
Conductor Type	Copper Bus

Logistics

Pallet Quantity 432

Product Assets

- [Catalogs - Substation Connectors \(SA\)](#)
- [Specifications - ICA1003](#)
- [Video - Hubbell Power Systems 3D Portal to help with developing 3D models of substation connector products](#)
- [Video - Hubbell Power Systems Quick Ship](#)