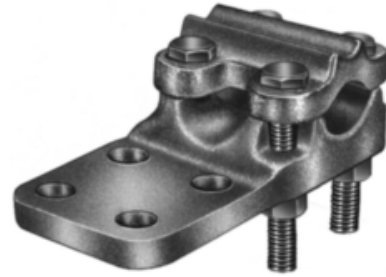


Tee, Bronze Bolted

By ANDERSON
Catalog # SF1B23

"Bolted Tees, Connecting Cable Main to Cable Tap, Cable Main- # 4 Sol.-250 MCM, Dia.- 0.204"-0.575", Cable Tap- # 4 Sol.-250 MCM, Dia.-0.204"-0.575", Material: Castings- Bronze Alloy, Hardware-Silicon Bronze or Stainless Steel"



*Representative Image

Features

- "Reversible cap accommodates a wide range of conductor sizes
- Conductor can enter straight or at 90 degrees to pad"

General

EU RoHS Indicator	No
Material	Bronze
Material - Clamping Hardware	Stainless Steel
Number of Pad Holes	2
Type	Tee, Bolted
UPC	096359325758

Dimensions

Weight	2.646 lb
Width - Flat Bar Tap	2 in

Conductor Related

Conductor Diameter (Main) - Maximum	0.84 in
Conductor Diameter (Main) - Minimum	0.54 in
Conductor Diameter (Main) Range	0.54 - 0.84
Conductor Diameter - Maximum	1.031 in
Conductor Diameter - Minimum	0.258 in
Conductor Diameter Range	0.258 - 1.031
Conductor Type	<ul style="list-style-type: none">• Copper Bus• Copper

Logistics

Pallet Quantity	648
-----------------	-----

Product Assets

[Catalogs - Substation Connectors \(SA\)](#)

[Sales Drawings - C-4129 \(SF Product Family\)](#)

[Video - Hubbell Power Systems 3D Portal to help with developing 3D models of substation connector products \(VI05050E0619\)](#)

[Video - Hubbell Power Systems Quick Ship \(VI05124E1018\)](#)