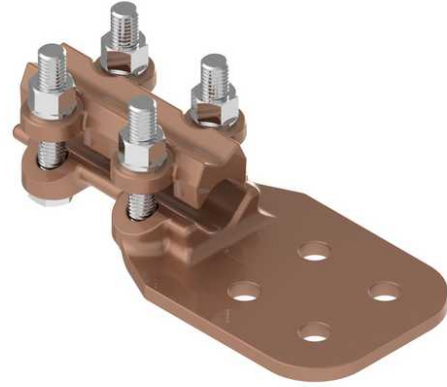


Terminal, Bronze Bolted

By ANDERSON
Catalog # [SWH025BTP](#)

Terminal, Bronze Bolted, Tin Platted (TP suffix), (Cable to Flat, Heavy Duty, Copper cable range 0.204-0.575 inches, Pad is 2 hole NEMA B size (1.5 in. x 3 in.)



*Representative Image

Features

- 1/2" dia. Hex-head clamping bolts for clamping copper cable
- Side formed pads are standard for flush mounting
- Clamping bolts have hex-stops for one-wrench installation
- Tongue holes have NEMA spacing

General

EU RoHS Indicator	No
Material	Bronze
Material - Clamping Hardware	Stainless Steel
Number of Pad Holes	2
Type	Bolted Lugs & Terminals
UPC	096359327301

Dimensions

Angle - Pad	180 °
Dimensions	6 in x 1.5 in x 0.875 in
Height	0.875 in
Length	6 in
Weight	2.352 lb
Width	1.5 in
Width - Pad	1.5 in

Conductor Related

Conductor Diameter - Maximum	0.575 in
Conductor Diameter - Minimum	0.204 in
Conductor Diameter Range	0.204 - 0.575
Conductor Type	Copper

Product Assets

[Catalogs - Substation Connectors \(SA\)](#)
[Sales Drawings - C-2660](#)
[Sales Drawings - C-2660 \(SWH Product Family\)](#)
[Video - Hubbell Power Systems 3D Portal to help with developing 3D models of substation connector products \(VI05050E0619\)](#)
[Video - Hubbell Power Systems Quick Ship \(VI05124E1018\)](#)