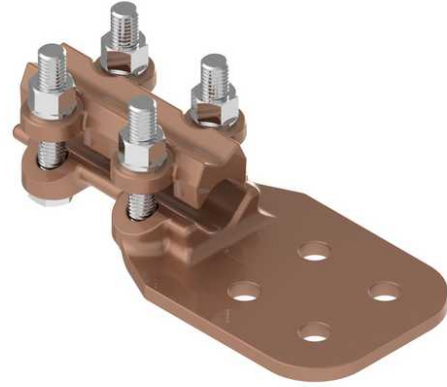


Terminal, Bronze Bolted

By ANDERSON
Catalog # [SWH050B2](#)

Terminal, Bronze Bolted, Cable to Flat, Heavy Duty, Copper cable range 0.325-0.813 inches, Pad is 2 hole NEMA B2 size (2 in. x 3 in.)



*Representative Image

Features

- 1/2" dia. Hex-head clamping bolts for clamping copper cable
- Side formed pads are standard for flush mounting
- Clamping bolts have hex-stops for one-wrench installation
- Tongue holes have NEMA spacing

General

Material	Bronze
Material - Clamping Hardware	Stainless Steel
Number of Bolt Holes	2
Number of Pad Holes	2
Type	Bolted Lugs & Terminals
UPC	096359327356

Dimensions

Angle - Pad	180 °
Dimensions	6 in x 2 in x 1.125 in
Height	1.125 in
Length	6 in
Weight	2.48 lb
Width	2 in
Width - Pad	2 in

Conductor Related

Conductor Diameter - Maximum	0.813 in
Conductor Diameter - Minimum	0.325 in
Conductor Diameter Range	0.325 - 0.813
Conductor Type	Copper

Logistics

Pallet Quantity	720
-----------------	-----

Product Assets

[Catalogs - Substation Connectors \(SA\)](#)

[Sales Drawings - C-2660](#)

[Video - Hubbell Power Systems 3D Portal to help with developing 3D models of substation connector products \(VI05050E0619\)](#)

[Video - Hubbell Power Systems Quick Ship \(VI05124E1018\)](#)