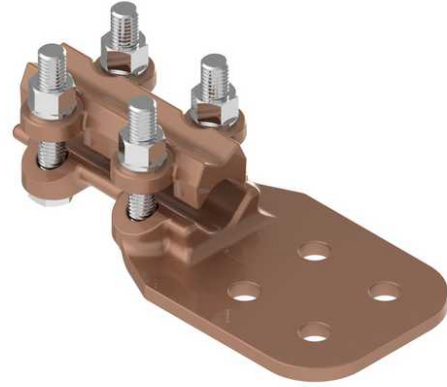


## Terminal, Bronze Bolted

By ANDERSON  
Catalog # [SWH080C](#)

Terminal, Bronze Bolted, Cable to Flat, Heavy Duty, Copper cable range 0.365-1.031 inches, Pad is 4 hole NEMA C size (3 in. x 3 in.)



\*Representative Image

### Features

- 1/2" dia. Hex-head clamping bolts for clamping copper cable
- Side formed pads are standard for flush mounting
- Clamping bolts have hex-stops for one-wrench installation
- Tongue holes have NEMA spacing

### General

Material	Bronze
Material - Clamping Hardware	Stainless Steel
Number of Bolt Holes	4
Number of Pad Holes	4
Type	Bolted Lugs & Terminals
UPC	096359327530

### Dimensions

Angle - Pad	180 °
Dimensions	6.5 in x 3 in x 1.5 in
Height	1.5 in
Length	6.5 in
Weight	3.01 lb
Width	3 in
Width - Pad	3 in

### Conductor Related

Conductor Diameter - Maximum	1.031 in
Conductor Diameter - Minimum	0.365 in
Conductor Diameter Range	0.365 - 1.031
Conductor Type	Copper

### Logistics

Pallet Quantity	504
-----------------	-----

### Product Assets

[Catalogs - Substation Connectors \(SA\)](#)

[Sales Drawings - C-2660](#)

[Video - Hubbell Power Systems 3D Portal to help with developing 3D models of substation connector products \(VI05050E0619\)](#)

[Video - Hubbell Power Systems Quick Ship \(VI05124E1018\)](#)