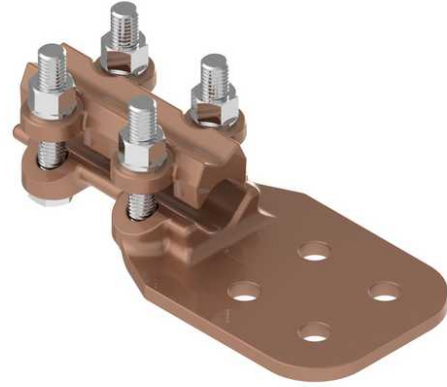


Terminal, Bronze Bolted

By ANDERSON
Catalog # [SWH080D](#)

Terminal, Bronze Bolted, Cable to Flat, Heavy Duty, Copper cable range 0.365-1.031 inches, Pad is 4 hole NEMA D size (4 in. x 4 in.)



*Representative Image

Features

- 1/2" dia. Hex-head clamping bolts for clamping copper cable
- Side formed pads are standard for flush mounting
- Clamping bolts have hex-stops for one-wrench installation
- Tongue holes have NEMA spacing

General

EU RoHS Indicator	No
Material	Bronze
Material - Clamping Hardware	Stainless Steel
Number of Bolt Holes	4
Number of Pad Holes	4
Type	Bolted Lugs & Terminals
UPC	096359327608

Dimensions

Angle - Pad	180 °
Weight	6.272 lb
Width - Pad	4 in

Conductor Related

Conductor Diameter - Maximum	1.031 in
Conductor Diameter - Minimum	0.365 in
Conductor Diameter Range	0.365 - 1.031
Conductor Type	Copper

Logistics

Pallet Quantity	378
-----------------	-----

Product Assets

[Catalogs - Substation Connectors \(SA\)](#)

[Sales Drawings - C-2660 \(SWH Product Family\)](#)

[Video - Hubbell Power Systems 3D Portal to help with developing 3D models of substation connector products \(VI05050E0619\)](#)

[Video - Hubbell Power Systems Quick Ship \(VI05124E1018\)](#)