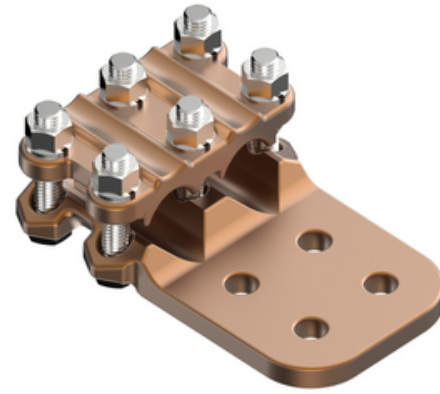


HUBBELL Power Systems

Terminal, Bronze Bolted

By ANDERSON
Catalog # [SWHD050B2](#)

Bronze alloy terminal for connecting copper cables of equal size to a copper flat. Tongue holes have NEMA spacing. All sizes furnished with reversible cable caps.



*Representative Image

Features

- 1/2" dia. Hex-head clamping bolts for clamping copper cable
- Side formed pads are standard for flush mounting
- Clamping bolts have hex-stops for one-wrench installation
- Tongue holes have NEMA spacing

General

Catalog Number	SWHD050B2
Material	Bronze
Material - Clamping Hardware	Stainless Steel
Number of Bolt Holes	2
Number of Ground Braid Lug Holes	0
Number of Pad Holes	2
Type	Bolted Lugs & Terminals
UPC	096359327974

Dimensions

Angle - Pad	180 °
Base Hole Spacing	0 in
Diameter - Base Holes	0 in
Diameter - Bolt	0 in
Diameter - Inside	0 in
Length - Coupling	0 in
Length Before Compression	0 in
Weight	4.998 lb
Width - Pad	2 in

Electrical Ratings

Maximum Current Rating Amps 0
Continuous

Conductor Related

Conductor Diameter - Maximum	0.813 in
Conductor Diameter - Minimum	0.325 in
Conductor Diameter Range	0.325 - 0.813
Conductor Type	Copper

Logistics

Pallet Quantity 336

Product Assets

[Catalogs - Substation Connectors \(SA\)](#)
[Video - Hubbell Power Systems 3D Portal to help with developing 3D models of substation connector products](#)
[Video - Hubbell Power Systems Quick Ship](#)



A Hubbell brand

©2024 Hubbell Incorporated. All rights reserved
AN-SWHD050B2-SPEC-EN | REV 6/2024