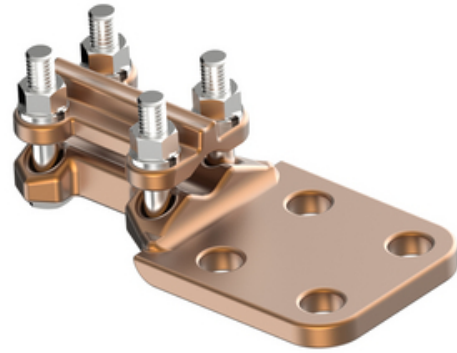


HUBBELL Power Systems

Terminal, Bronze Bolted

By ANDERSON
Catalog # [SWL022C](#)

Bronze alloy terminal, with 3/8" dia hex head clamping bolts, for connecting copper cable to copper flat. Side formed pads are standard for flush mounting. Clamping bolts have hex-stops for one-wrench installation. Tongue holes have NEMA spacing. All sizes are furnished with reversible cable caps.



*Representative Image

Features

- "Clamping bolts have hex-stops for one-wrench installation
- Side formed pads are standard for flush mounting
- furnished with reversible cable caps
- 90° pad orientation available, 45° pad orientation available"

General

Catalog Number	SWL022C
EU RoHS Indicator	No
Material	Bronze
Material - Clamping Hardware	Stainless Steel
Number of Bolt Holes	4
Number of Ground Braid Lug Holes	0
Number of Pad Holes	4
Type	Bolted Lugs & Terminals
UPC	096359328247

Dimensions

Angle - Pad	180 °
Base Hole Spacing	0 in
Diameter - Base Holes	0 in
Diameter - Bolt	0 in
Diameter - Inside	0 in
Length - Coupling	0 in
Length Before Compression	0 in
Weight	1.764 lb
Width - Pad	3 in

Electrical Ratings

Maximum Current Rating Amps 0
Continuous

Conductor Related

Conductor Diameter - Maximum	0.419 in
Conductor Diameter - Minimum	0.162 in
Conductor Diameter Range	0.162 - 0.419
Conductor Type	Copper

Product Assets

[Catalogs - Substation Connectors \(SA\)](#)
[Sales Drawings - C-2829 \(SWL Product Family\)](#)
[Video - Hubbell Power Systems 3D Portal to help with developing 3D models of substation connector products](#)
[Video - Hubbell Power Systems Quick Ship](#)

