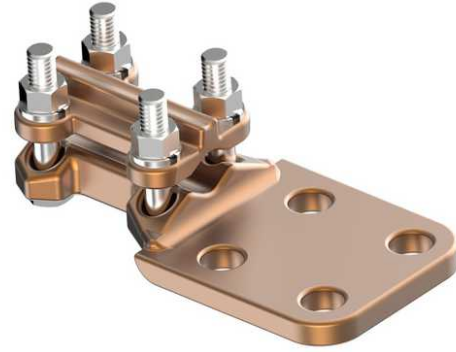


Terminal, Bronze Bolted

By ANDERSON
Catalog # [SWL025B](#)

"Terminal, Bronze Bolted, Tap Lug, Cable to Flat, Single Eye Bolt, Cable Range 0.102"-0.332" Dia. to 3/4" Thick Flat, Material: Castings-Bronze alloy, Eyebolt-High strength bronze, Hardware-Stainless steel"



*Representative Image

Features

- "Clamping bolts have hex-stops for one-wrench installation
- Side formed pads are standard for flush mounting
- furnished with reversible cable caps
- 90° pad orientation available, 45° pad orientation available"

General

Material	Bronze
Material - Clamping Hardware	Stainless Steel
Number of Bolt Holes	2
Number of Pad Holes	2
Type	Bolted Lugs & Terminals
UPC	096359328261

Dimensions

Angle - Pad	180 °
Dimensions	6 in x 1.5 in x 0.88 in
Height	0.88 in
Length	6 in
Weight	1.303 lb
Width	1.5 in
Width - Pad	1.5 in

Conductor Related

Conductor Diameter - Maximum	0.575 in
Conductor Diameter - Minimum	0.204 in
Conductor Diameter Range	0.204 - 0.575
Conductor Type	Copper

Logistics

Pallet Quantity	1440
-----------------	------

Product Assets

[Catalogs - Substation Connectors \(SA\)](#)

[Sales Drawings - C-2829](#)

[Video - Hubbell Power Systems 3D Portal to help with developing 3D models of substation connector products \(VI05050E0619\)](#)

[Video - Hubbell Power Systems Quick Ship \(VI05124E1018\)](#)