

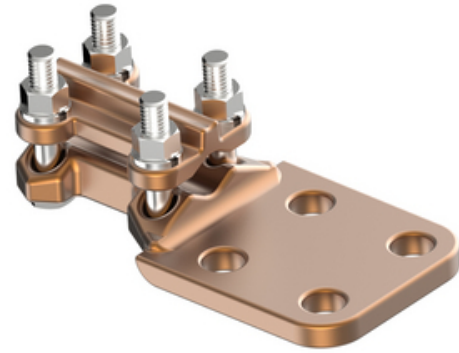
HUBBELL Power Systems

Terminal, Bronze Bolted

By ANDERSON

Catalog # [SWL025BTP](#)

Bronze alloy terminal, with 3/8" dia hex head clamping bolts, for connecting copper cable to copper flat. Side formed pads are standard for flush mounting. Clamping bolts have hex-stops for one-wrench installation. Tongue holes have NEMA spacing. All sizes are furnished with reversible cable caps.



*Representative Image

Features

- "Clamping bolts have hex-stops for one-wrench installation
- Side formed pads are standard for flush mounting
- furnished with reversible cable caps
- Tin plating will be supplied"

General

Catalog Number	SWL025BTP
Material	Bronze
Material - Clamping Hardware	Stainless Steel
Number of Ground Braid Lug Holes	0
Number of Pad Holes	2
Type	Bolted Lugs & Terminals
UPC	096359328285

Dimensions

Angle - Pad	180 °
Base Hole Spacing	0 in
Diameter - Base Holes	0 in
Diameter - Bolt	0 in
Diameter - Inside	0 in
Dimensions	6 in x 1.5 in x 0.88 in
Height	0.88 in
Length	6 in
Length - Coupling	0 in
Length Before Compression	0 in
Weight	1.303 lb
Width	1.5 in
Width - Pad	1.5 in

Electrical Ratings

Maximum Current Rating Amps 0
Continuous

Conductor Related

Conductor Diameter - Maximum	0.575 in
Conductor Diameter - Minimum	0.204 in
Conductor Diameter Range	0.204 - 0.575
Conductor Type	Copper

Logistics

Pallet Quantity	1440
-----------------	------

Product Assets

[Catalogs - Substation Connectors \(SA\)](#)

[Sales Drawings - C-2829](#)

[Video - Hubbell Power Systems 3D Portal to help with](#)

[developing 3D models of substation connector products](#)

[Video - Hubbell Power Systems Quick Ship](#)



A Hubbell brand

©2024 Hubbell Incorporated. All rights reserved
AN-SWL025BTP-SPEC-EN | REV 6/2024