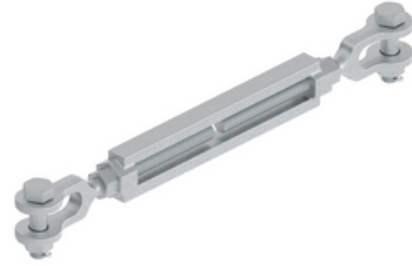


HUBBELL Power Systems

Turnbuckle

By ANDERSON
Catalog # [TB1JJ18LN](#)

Turnbuckles are used as adjustable extension links to maintain proper tower clearance on assemblies at tower end. Jaw ends are supplied with bolt, nut, and humpback cotter pin. Add "LN" suffix if jam nuts are required. Remove "BNK" suffix for type EE turnbuckles.



Features

- "Turnbuckle, 1", Jaw-Jaw, Forged Steel, Diameter = 1.00", Take Up = 18.00" and Ult. Strength = 50,000 LBS
- The torque required to rotate the boss of a turnbuckle under tension can be calculated by the formula:
- $T = 2 (kdW/12)$ ft-lb
- Where: k = Friction factor (0.16)
- d = Nominal thread diameter (inches)
- W = Applied tension load (lb)
- Example: 1-1/2" turnbuckle under 4,000 lb tension
- $T = 2(0.16 \times 1.00 \times 4000 / 12) = 107 \text{ ft-lb}$

General

Material	Steel
Material - Pin (Clevis)	Galvanized Steel
Number of Bolt Holes	0
Strength Rating - Ultimate	50000 lb
Strength Rating - Ultimate Body	0 lb

Dimensions

Assembly Rating (Ultimate)	0 lb
Diameter - Bolt	0 in
Diameter - Pin	0 in
Insulator Throat Diameter - Maximum	0 in
Insulator Throat Diameter - Minimum	0 in
Insulator Throat Diameter Range	0 - 0
Length - Pin	0 in
Maximum Adjustment	0 in
Ring Height	0 in
Take Up	18 in
Weight	14 lb

Conductor Related

Conductor Diameter - Maximum	0 in
Conductor Spacing	0 in

Product Assets

[Catalogs - Transmission Connectors Catalog - Full](#)

