

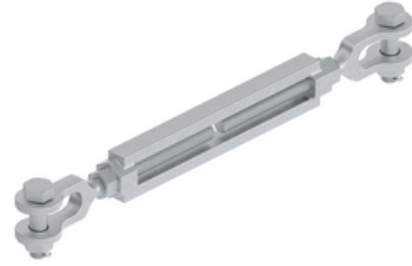
HUBBELL Power Systems

Turnbuckle

By ANDERSON

Catalog # [TB78JJ12BNKLN](#)

Turnbuckles are used as adjustable extension links to maintain proper tower clearance on assemblies at tower end. Jaw ends are supplied with bolt, nut, and humpback cotter pin. Add "LN" suffix if jam nuts are required. Remove "BNK" suffix for type EE turnbuckles.



Features

- "Turnbuckle, 7/8", Jaw-Jaw, Forged Steel, Diameter = .88", Take Up = 12.00" and Ult. Strength = 36,000 LBS
- The torque required to rotate the boss of a turnbuckle under tension can be calculated by the formula:
- $T = 2 (kdW/12)$ ft-lb
- Where: k = Friction factor (0.16)
- d = Nominal thread diameter (inches)
- W = Applied tension load (lb)
- Example: 1-1/2" turnbuckle under 4,000 lb tension
- $T = 2(0.16 \times .88 \times 4000 / 12) = 93 \text{ ft-lb}$

General

EU RoHS Indicator	No
Material	Steel
Material - Pin (Clevis)	Galvanized Steel
Number of Bolt Holes	0
Series	TYPE JJ
Strength Rating - Ultimate	36000 lb
Strength Rating - Ultimate	0 lb
Body	
UPC	096359519478

Dimensions

Assembly Rating (Ultimate)	0 lb
Diameter - Bolt	0 in
Diameter - Pin	0 in
Insulator Throat Diameter - Maximum	0 in
Insulator Throat Diameter - Minimum	0 in
Insulator Throat Diameter Range	0 - 0
Length - Pin	0 in
Maximum Adjustment	0 in
Ring Height	0 in
Take Up	12 in
Weight	9.996 lb

Conductor Related

Conductor Diameter - Maximum	0 in
Conductor Spacing	0 in

Product Assets

[Catalogs - Transmission Connectors Catalog - Full](#)



A Hubbell brand

©2024 Hubbell Incorporated. All rights reserved
AN-TB78JJ12BNKLN-SPEC-EN | REV 6/2024