

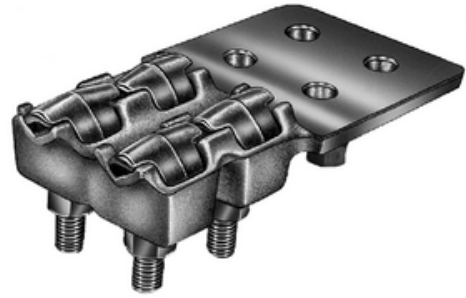
# HUBBELL

## Power Systems

### Terminal, Bronze Bolted

By ANDERSON  
Catalog # [VL289DH](#)

Bronze alloy terminal, with double eyebolt clamping for connecting two copper cables to copper flat. Double eyebolt provides high pullout resistance. Tongue holes have NEMA spacing. 45 deg and 90 deg connectors may be obtained by specifying the desired angle. Material: Castings-Bronze alloy, Eyebolt-High strength bronze, Hardware-silicon bronze or stainless steel.



\*Representative Image

#### Features

- "Double eyebolt provides high pullout resistance
- Cable entrance only from end of terminal
- 90° pad orientation available, 45° pad orientation available"

#### General

EU RoHS Indicator	No
Material	Bronze
Material - Clamping Hardware	Stainless Steel
Number of Eyebolts	2
Number of Ground Braid Lug	0
Holes	
Number of Pad Holes	4
Type	Terminal / Lug, Bolted
UPC	096359339281

#### Dimensions

Angle - Pad	180 °
Base Hole Spacing	0 in
Diameter - Base Holes	0 in
Diameter - Bolt	0 in
Diameter - Inside	0 in
Length - Coupling	0 in
Length Before Compression	0 in
Weight	6.566 lb
Width - Pad	4 in

#### Electrical Ratings

Maximum Current Rating Amps 0  
Continuous

#### Conductor Related

Conductor Diameter - Maximum	1.152 in
Conductor Diameter - Minimum	0.365 in
Conductor Diameter Range	0.365 - 1.152
Conductor Type	Copper

#### Product Assets

[Catalogs - Substation Connectors \(SA\)](#)  
[Sales Drawings - C-4818-2 \(VL Product Family\)](#)  
[Sales Drawings - C-4818-1 \(VL Product Family\)](#)  
[Video - Hubbell Power Systems 3D Portal to help with developing 3D models of substation connector products](#)  
[Video - Hubbell Power Systems Quick Ship](#)



A Hubbell brand

©2024 Hubbell Incorporated. All rights reserved  
AN-VL289DH-SPEC-EN | REV 6/2024