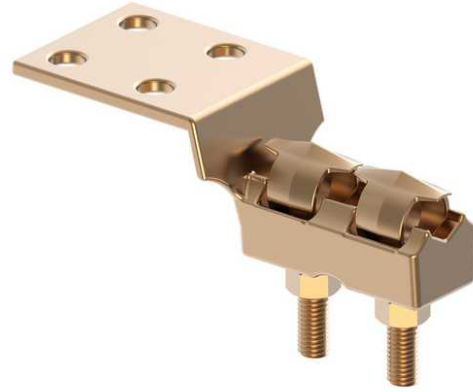


Terminal, Bronze Bolted

By ANDERSON
Catalog # [VL4D574H](#)

"Terminal, Copper Compression, Cable to Flat, Cable Range 0.419" Dia. to 1-1/2" Flat Pad with 2 Holes, Material: Copper"



*Representative Image

Features

- "Double eyebolt provides high pullout resistance"
- Cable entrance only from end of terminal"

General

EU RoHS Indicator	No
Material	Bronze
Material - Clamping Hardware	Stainless Steel
Number of Pad Holes	2
Type	Bolted Lugs & Terminals
UPC	096359339472

Dimensions

Angle - Pad	180 °
Weight	1.960 lb
Width - Pad	1.63 in

Conductor Related

Conductor Diameter - Maximum	0.681 in
Conductor Diameter - Minimum	0.258 in
Conductor Diameter Range	0.258 - 0.681
Conductor Type	Copper

Logistics

Pallet Quantity	864
-----------------	-----

Product Assets

[Catalogs - Substation Connectors \(SA\)](#)

[Sales Drawings - C-4818-1 \(VL Product Family\)](#)

[Sales Drawings - C-4818-2 \(VL Product Family\)](#)

[Video - Hubbell Power Systems 3D Portal to help with developing 3D models of substation connector products \(VI05050E0619\)](#)

[Video - Hubbell Power Systems Quick Ship \(VI05124E1018\)](#)