

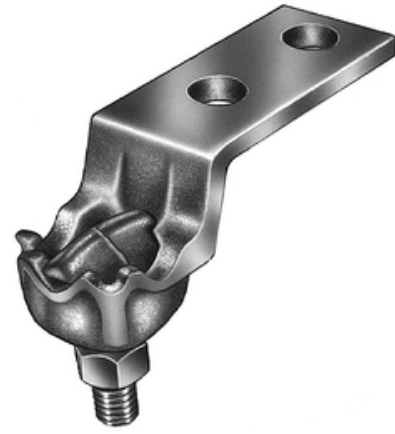
HUBBELL

Power Systems

Terminal, Bronze Bolted

By ANDERSON
Catalog # [VL4S341H](#)

Bronze single eyebolt terminal for connecting copper cable to copper flat. Side formed pads are standard for flush mounting. Material: Castings-Bronze alloy, Eyebolt-High strength bronze, Hardware-silicon bronze or stainless steel.



*Representative Image

Features

- "Side formed pads are standard for flush mounting"
- Cable entrance only from end of terminal"

General

| | |
|------------------------------|------------------------|
| EU RoHS Indicator | No |
| Material | Bronze |
| Material - Clamping Hardware | Stainless Steel |
| Number of Eyebolts | 1 |
| Number of Ground Braid Lug | 0 |
| Holes | |
| Number of Pad Holes | 1 |
| Type | Terminal / Lug, Bolted |
| UPC | 096359339557 |

Dimensions

| | |
|---------------------------|----------|
| Base Hole Spacing | 0 in |
| Diameter - Base Holes | 0 in |
| Diameter - Bolt | 0 in |
| Diameter - Inside | 0 in |
| Length - Coupling | 0 in |
| Length Before Compression | 0 in |
| Weight | 0.392 lb |
| Width - Pad | 1 in |

Electrical Ratings

Maximum Current Rating Amps 0
Continuous

Conductor Related

| | |
|------------------------------|---------------|
| Conductor Diameter - Maximum | 0.419 in |
| Conductor Diameter - Minimum | 0.128 in |
| Conductor Diameter Range | 0.128 - 0.419 |
| Conductor Type | Copper |

Product Assets

[Catalogs - Substation Connectors \(SA\)](#)
[Sales Drawings - C-4818-2 \(VL Product Family\)](#)
[Sales Drawings - C-4818-1 \(VL Product Family\)](#)
[Video - Hubbell Power Systems 3D Portal to help with developing 3D models of substation connector products](#)
[Video - Hubbell Power Systems Quick Ship](#)



A Hubbell brand

©2024 Hubbell Incorporated. All rights reserved
AN-VL4S341H-SPEC-EN | REV 6/2024