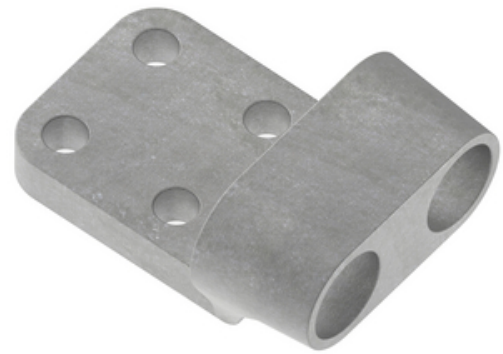


# HUBBELL Power Systems

## Terminal, Aluminum Weldment

By ANDERSON  
Catalog # [W2CF117C](#)

Aluminum alloy weldment terminal for connecting two aluminum cables to aluminum or copper flat pad. Tongue holes have NEMA spacing. Contact sealant is recommended for contact pad after welding. Cable should be positioned 1/8" to 3/16" from edge inside barrel prior to puddle welding. For use with any stranding Aluminum conductor. 45 deg and 90 deg angle connectors may be obtained by adding the desired angle to the end of the catalog number. Material: casting - 356-F aluminum alloy.



\*Representative Image

### Features

- Tongue holes have NEMA spacing. Contact sealant is recommended for contact pad after welding
- Cable should be positioned 1/8" to 3/16" from edge inside barrel prior to puddle welding
- For use with any stranding Aluminum conductor
- 45 deg and 90 deg angle connectors may be obtained by adding the desired angle to the end of the catalog number.

### General

|                                  |                             |
|----------------------------------|-----------------------------|
| EU RoHS Indicator                | No                          |
| Material                         | Aluminum                    |
| Number of Bolt Holes             | 4                           |
| Number of Ground Braid Lug Holes | 0                           |
| Number of Pad Holes              | 4                           |
| Type                             | Terminal, Aluminum Weldment |
| UPC                              | 096359339946                |

### Dimensions

|                           |                           |
|---------------------------|---------------------------|
| Angle - Pad               | 180 °                     |
| Base Hole Spacing         | 0 in                      |
| Diameter - Base Holes     | 0 in                      |
| Diameter - Bolt           | 0 in                      |
| Diameter - Inside         | 0 in                      |
| Dimensions                | 3.25 in x 3 in x 0.688 in |
| Height                    | 0.688 in                  |
| Length                    | 3.25 in                   |
| Length - Coupling         | 0 in                      |
| Length Before Compression | 0 in                      |
| Weight                    | 1.372 lb                  |
| Width                     | 3 in                      |
| Width - Pad               | 3 in                      |

### Electrical Ratings

Maximum Current Rating Amps 0  
Continuous

### Conductor Related

|                              |                                                               |
|------------------------------|---------------------------------------------------------------|
| Conductor Compatibility      | ACSR-Drake-795-26/7;AAC-Snapdragon-900-61;AAC-Magnolia-954-37 |
| Conductor Diameter - Maximum | 1.125 in                                                      |
| Conductor Diameter - Minimum | 1.093 in                                                      |
| Conductor Diameter Range     | 1.093 - 1.125                                                 |
| Conductor Type               | AAC<br>ACSR                                                   |

### Product Assets

[Catalogs - Substation Connectors \(SA\)](#)  
[Sales Drawings - C-5257 \(W2CF Product Family\)](#)  
[Video - Hubbell Power Systems 3D Portal to help with developing 3D models of substation connector products](#)  
[Video - Hubbell Power Systems Quick Ship](#)



**A Hubbell brand**

©2024 Hubbell Incorporated. All rights reserved  
AN-W2CF117C-SPEC-EN | REV 6/2024