

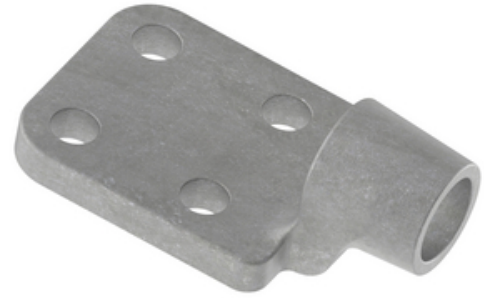
HUBBELL

Power Systems

Terminal, Aluminum Weldment

By ANDERSON
Catalog # [WCF106C](#)

Aluminum alloy weldment terminal for connecting aluminum cable to aluminum copper flat pad. Tongue holes have NEMA spacing. Contact sealant is recommended for contact pad after welding. Cable should be positioned 1/8" to 3/16" from edge inside barrel prior to uddle welding. For use with any stranding aluminum conductor. 45 deg and 90 deg angle connectors may be obtained by specifying the desired angle at the end of the catalog number. Material: castings - 356-F aluminum alloy.



Features

- Tongue holes have NEMA spacing. Contact sealant is recommended for contact pad after welding
- Cable should be positioned 1/8" to 3/16" from edge inside barrel prior to uddle welding
- For use with any stranding aluminum conductor
- 45 deg and 90 deg angle connectors may be obtained by specifying the desired angle at the end of the catalog number.

General

EU RoHS Indicator	No
Material	Aluminum
Number of Bolt Holes	4
Number of Ground Braid Lug Holes	0
Number of Pad Holes	4
Type	Terminal, Aluminum Weldment
UPC	096359340409

Dimensions

Angle - Pad	180 °
Base Hole Spacing	0 in
Diameter - Base Holes	0 in
Diameter - Bolt	0 in
Diameter - Inside	0 in
Length - Coupling	0 in
Length Before Compression	0 in
Weight	0.784 lb
Width - Pad	3 in

Electrical Ratings

Maximum Current Rating Amps 0
Continuous

Conductor Related

Conductor Compatibility	ACSR-Teal-605-30/19;ACSR-Grosbeak-636-26/7;ACSR-Egret-636-30/19;ACSR-Flamingo-666.6-24/7;ACSR-Gannet-666.6-26/7;AAC-Cattail-750-61;AAC-Arbutus-795-37;AAC-Lilac-795-61
Conductor Diameter - Maximum	1.028 in
Conductor Diameter - Minimum	0.99 in
Conductor Diameter Range	0.99 - 1.028
Conductor Type	AAC ACSR

Product Assets

[Catalogs - Substation Connectors \(SA\)](#)
[Sales Drawings - C-1419 \(WCF Product Family\)](#)
[Video - Hubbell Power Systems 3D Portal to help with developing 3D models of substation connector products](#)
[Video - Hubbell Power Systems Quick Ship](#)



A Hubbell brand

©2024 Hubbell Incorporated. All rights reserved
AN-WCF106C-SPEC-EN | REV 6/2024