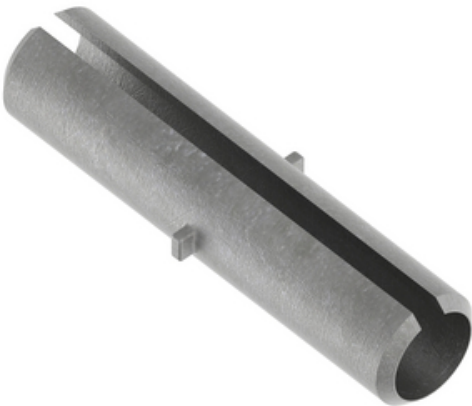


Coupler, Aluminum Weldment

By ANDERSON
Catalog # [WCIH5050](#)

Aluminum alloy weldment coupler for connecting aluminum tubing. Slot provides for close fit regardless of tubing tolerance. The joint can be stiffened, if desired, by drilling four holes in the tubing at 90 degree lateral points and plug welding the tubing to the coupler. To specify coupler for extra heavy (Schedule 90 EHIPS) tubing, add "H" to catalog number. Material: castings - 356-T6 aluminum alloy, extrusions - 6061-T6 alloy.



*Representative Image

Features

- "Schedule 80 Rigid Bus
- Slot provides for close fit regardless of tubing tolerance
- For extra stiffness drill Four holes on tube at 90 degree and plug weld"

General

EU RoHS Indicator	No
Material	Aluminum
Type	Tube to Tube Couplers
UPC	096359340966

Dimensions

Base Hole Spacing	0 in
Weight	9.31 lb

Electrical Ratings

Maximum Current Rating Amps Continuous	See Technical Advisor
---	-----------------------

Conductor Related

Conductor Type	Aluminum Bus
----------------	--------------

Logistics

Pallet Quantity	48
-----------------	----

Product Assets

[Catalogs - Substation Connectors \(SA\)](#)
[Sales Drawings - C-4940 \(WCI Product Family\)](#)
[Video - Hubbell Power Systems 3D Portal to help with developing 3D models of substation connector products \(VI05050E0619\)](#)
[Video - Hubbell Power Systems Quick Ship \(VI05124E1018\)](#)

