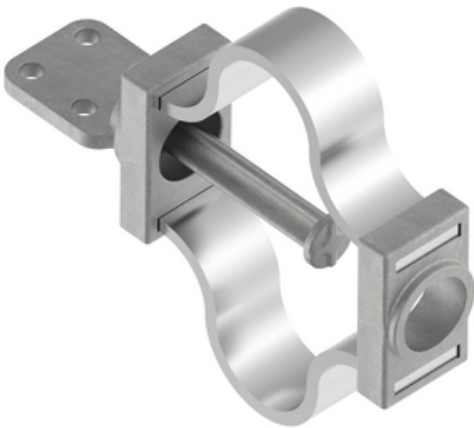


Terminal, Aluminum Weldment

By ANDERSON
Catalog # [WUTF24D](#)

Aluminum alloy weldment expansion terminals for connecting standard (schedule 40) aluminum tubing to aluminum or copper flat pad. Designed for +/- 2 inch expansion. Specify "H" in catalog number (WUTFH) if Schedule 80 EhiPS tubing is to be used. Proper guide ball and heavy laminations will be furnished. Contact sealant is recommended for contact pad. To obtain pad rotated 90 degrees, add "V" to catalog number (WUTFV). Material: Castings- Aluminum alloy, Factory formed laminated shunt- Aluminum.



*Representative Image

Features

- Designed for +/- 2 inch expansion
- Specify "H" in catalog number (WUTFH) if Schedule 80 EhiPS tubing is to be used
- Proper guide ball and heavy laminations will be furnished
- Contact sealant is recommended for contact pad
- To obtain pad rotated 90 degrees, add "V" to catalog number (WUTFV)

General

EU RoHS Indicator	No
Material	Aluminum
Number of Pad Holes	4
Type	Terminal, Aluminum Weldment, Expansion
UPC	096359341154

Dimensions

Angle - Pad	180 °
Diameter - Rod / Tube	2-1/2 in
Weight	8.036 lb
Width - Pad	4 in

Electrical Ratings

Maximum Current Rating Amps Continuous	Contact Tech Advisor
---	----------------------

Conductor Related

Conductor Type	Aluminum Bus
----------------	--------------

Product Assets

- [Catalogs - Substation Connectors \(SA\)](#)
- [Sales Drawings - CC-12824 \(WUTF Product Family\)](#)
- [Video - Hubbell Power Systems 3D Portal to help with developing 3D models of substation connector products \(VI05050E0619\)](#)
- [Video - Hubbell Power Systems Quick Ship \(VI05124E1018\)](#)

