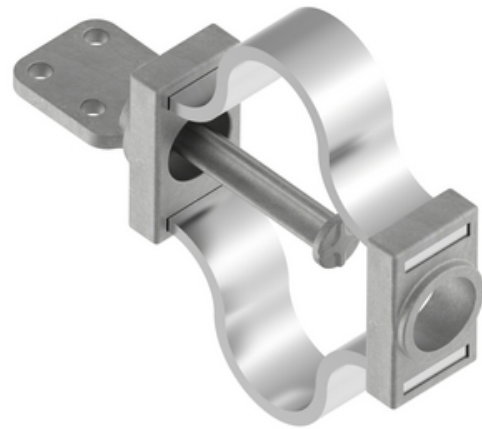


HUBBELL Power Systems

Terminal, Aluminum Weldment

By ANDERSON
Catalog # [WFTF30C](#)

Aluminum alloy weldment expansion terminals for connecting standard (schedule 40) aluminum tubing to aluminum or copper flat pad. Designed for +/- 2 inch expansion. Specify "H" in catalog number (WFTFH) if Schedule 80 EhiPS tubing is to be used. Proper guide ball and heavy laminations will be furnished. Contact sealant is recommended for contact pad. To obtain pad rotated 90 degrees, add "V" to catalog number (WFTFV).
Material: Castings- Aluminum alloy, Factory formed laminated shunt- Aluminum.



*Representative Image

Features

- Designed for +/- 2 inch expansion
- Specify "H" in catalog number (WFTFH) if Schedule 80 EhiPS tubing is to be used
- Proper guide ball and heavy laminations will be furnished
- Contact sealant is recommended for contact pad
- To obtain pad rotated 90 degrees, add "V" to catalog number (WFTFV)

General

EU RoHS Indicator	No
Material	Aluminum
Number of Pad Holes	4
Type	Terminal, Aluminum Weldment, Expansion
UPC	096359341161

Dimensions

Angle - Pad	180 °
Diameter - Rod / Tube	3 in
Weight	8.722 lb
Width - Pad	3 in

Electrical Ratings

Maximum Current Rating Amps Continuous	Contact Tech Advisor
---	----------------------

Conductor Related

Conductor Type	Aluminum Bus
----------------	--------------

Logistics

Pallet Quantity	12
-----------------	----

Product Assets

[Catalogs - Substation Connectors \(SA\)](#)
[Sales Drawings - CC-12824 \(WFTF Product Family\)](#)
[Video - Hubbell Power Systems 3D Portal to help with developing 3D models of substation connector products](#)
[Video - Hubbell Power Systems Quick Ship](#)



A Hubbell brand

©2024 Hubbell Incorporated. All rights reserved
AN-WFTF30C-SPEC-EN | REV 6/2024