

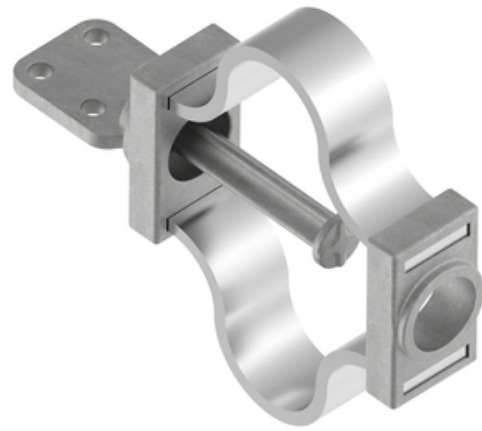
# HUBBELL Power Systems

## Terminal, Aluminum Weldment

By ANDERSON

Catalog # [WFTFV34D](#)

Aluminum alloy weldment expansion terminals for connecting standard (schedule 40) aluminum tubing to aluminum or copper flat pad. Designed for +/- 2 inch expansion. Specify "H" in catalog number (WFTFH) if Schedule 80 EhiPS tubing is to be used. Proper guide ball and heavy laminations will be furnished. Contact sealant is recommended for contact pad. To obtain pad rotated 90 degrees, add "V" to catalog number (WTFV). Material: Castings- Aluminum alloy, Factory formed laminated shunt- Aluminum.



\*Representative Image

### Features

- Designed for +/- 2 inch expansion
- Specify "H" in catalog number (WFTFH) if Schedule 80 EhiPS tubing is to be used
- Proper guide ball and heavy laminations will be furnished
- Contact sealant is recommended for contact pad
- To obtain pad rotated 90 degrees, add "V" to catalog number (WTFV)

### General

EU RoHS Indicator	No
Material	Aluminum
Number of Pad Holes	4
Type	Terminal, Aluminum Weldment, Expansion
UPC	096359409168

### Dimensions

Angle - Pad	90 °
Diameter - Rod / Tube	3-1/2 in
Dimensions	14.125 in x 13 in x 4 in
Height	4 in
Length	14.125 in
Weight	9.996 lb
Width	13 in
Width - Pad	3 in

### Electrical Ratings

Maximum Current Rating Amps Contact Tech Advisor  
Continuous

### Conductor Related

Conductor Type Aluminum Bus

### Product Assets

[Catalogs - Substation Connectors \(SA\)](#)  
[Sales Drawings - CC-12922-1 \(WFTFV Product Family\)](#)  
[Sales Drawings - CC-12922](#)  
[Sales Drawings - CC-12922-2 \(WFTFV Product Family\)](#)  
[Video - Hubbell Power Systems 3D Portal to help with developing 3D models of substation connector products](#)  
[Video - Hubbell Power Systems Quick Ship](#)



A Hubbell brand

©2024 Hubbell Incorporated. All rights reserved  
AN-WFTFV34D-SPEC-EN | REV 6/2024