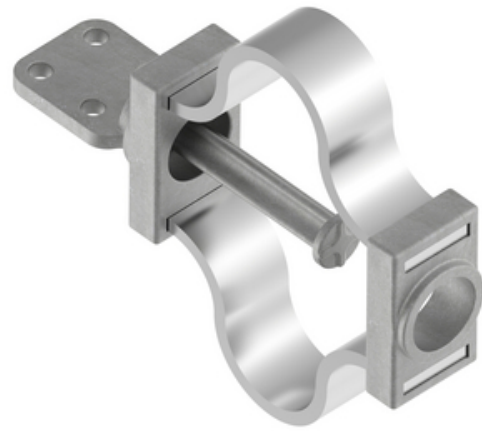


Terminal, Aluminum Weldment

By ANDERSON

Catalog # [WFTFV40C](#)

Aluminum alloy weldment expansion terminals for connecting standard (schedule 40) aluminum tubing to aluminum or copper flat pad. Designed for +/- 2 inch expansion. Specify "H" in catalog number (WTFH) if Schedule 80 EhiPS tubing is to be used. Proper guide ball and heavy laminations will be furnished. Contact sealant is recommended for contact pad. To obtain pad rotated 90 degrees, add "V" to catalog number (WTFV). Material: Castings- Aluminum alloy, Factory formed laminated shunt- Aluminum.



*Representative Image

Features

- Designed for +/- 2 inch expansion
- Specify "H" in catalog number (WTFH) if Schedule 80 EhiPS tubing is to be used
- Proper guide ball and heavy laminations will be furnished
- Contact sealant is recommended for contact pad
- To obtain pad rotated 90 degrees, add "V" to catalog number (WTFV)

General

| | |
|---------------------|--|
| EU RoHS Indicator | No |
| Material | Aluminum |
| Number of Pad Holes | 4 |
| Type | Terminal, Aluminum Weldment, Expansion |
| UPC | 096359341352 |

Dimensions

| | |
|-----------------------|---------|
| Angle - Pad | 90 ° |
| Diameter - Rod / Tube | 4 in |
| Weight | 9.31 lb |
| Width - Pad | 4 in |

Electrical Ratings

Maximum Current Rating Amps Contact Tech Advisor
Continuous

Conductor Related

Conductor Type Aluminum Bus

Product Assets

[Catalogs - Substation Connectors \(SA\)](#)
[Sales Drawings - CC-12922-1 \(WTFV Product Family\)](#)
[Sales Drawings - CC-12922-2 \(WTFV Product Family\)](#)
[Video - Hubbell Power Systems 3D Portal to help with developing 3D models of substation connector products](#)
[Video - Hubbell Power Systems Quick Ship](#)



A Hubbell brand