

# HUBBELL

## Power Systems

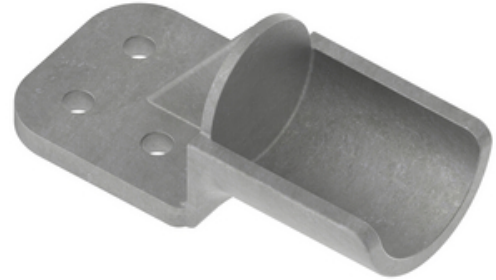
### Terminal, Aluminum Weldment

By ANDERSON

Catalog # [WSTF06B2CF](#)

Aluminum alloy weldment terminal for connecting aluminum tubing to aluminum or copper flat pad. Tongue holes have NEMA spacing. Contact sealant is recommended for contact pad after welding. Center formed pads may be obtained by adding "CF" to the catalog number. 45 deg & 90 deg angle connectors may be obtained by specifying desired angle in the catalog number.

Material: castings - 356-F aluminum alloy.



\*Representative Image

#### Features

- Contact sealant is recommended for contact pad after welding
- Center formed pads may be obtained by adding suffix-CF to the catalog number
- 45 & 90 degree pad angles may be obtained by specifying desired angle

#### General

Material	Aluminum
Number of Pad Holes	2
Type	Terminal, Aluminum Weldment

#### Dimensions

Angle - Pad	180 °
Diameter - Rod / Tube	3/4 in
Diameter - Rod / Tube Outside	1.05 in
Weight	0.49 lb
Width - Pad	2 in

#### Electrical Ratings

Maximum Current Rating Amps Contact Hubbell Tech Advisor  
Continuous

#### Conductor Related

Conductor Type Aluminum Bus

#### Product Assets

[Catalogs - Substation Connectors \(SA\)](#)

[Video - Hubbell Power Systems 3D Portal to help with developing 3D models of substation connector products](#)

[Video - Hubbell Power Systems Quick Ship](#)



A Hubbell brand