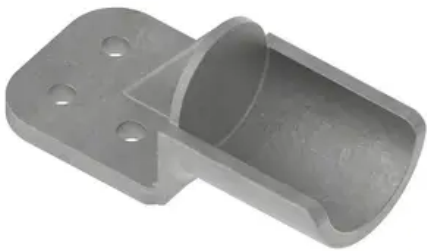


Terminal, Aluminum Weldment

By ANDERSON
Catalog # [WSTF34D](#)



*Representative Image

Aluminum alloy weldment terminal for connecting aluminum tubing to aluminum or copper flat pad. Tongue holes have NEMA spacing. Contact sealant is recommended for contact pad after welding. Center formed pads may be obtained by adding "CF" to the catalog number. 45 deg & 90 deg angle connectors may be obtained by specifying desired angle in the catalog number. Material: castings - 356-F aluminum alloy.

Features

- Contact sealant is recommended for contact pad after welding
- Center formed pads may be obtained by adding suffix-CF to the catalog number
- 45 & 90 degree pad angles may be obtained by specifying desired angle

General

Catalog Number	WSTF34D
EU RoHS Indicator	No
Material	Aluminum
Number of Pad Holes	4
Type	Terminal, Aluminum Weldment
UPC	096359342298

Dimensions

Angle - Pad	180 °
Diameter - Rod / Tube	3-1/2 in
Diameter - Rod / Tube Outside	4 in

Weight	2.94 lb
Width - Pad	4 in

Electrical Ratings

Maximum Current Rating Amps	Contact Hubbell Tech Advisor
Continuous	

Conductor Related

Conductor Type	Aluminum Bus
----------------	--------------

Certifications And Compliance

Buy America(n) Qualified	Contact Manufacturer
--------------------------	----------------------

Product Assets

- [Catalogs - Substation Connectors \(SA\)](#)
- [Sales Drawings - C-1291 \(WSTF Product Family\)](#)
- [Specifications - WSTF34D](#)
- [Video - Hubbell Power Systems 3D Portal to help with developing 3D models of substation connector products](#)
- [Video - Hubbell Power Systems Quick Ship](#)