

# HUBBELL

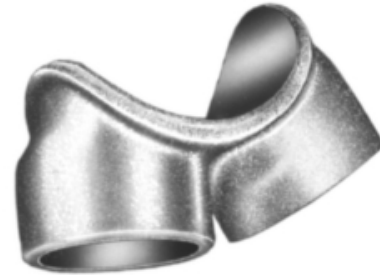
## Power Systems

### Tee, Aluminum Weldment, Angle

By ANDERSON

Catalog # [WTT2153420](#)

Aluminum alloy straight weldment tee for connecting aluminum tubing main to two aluminum tubing taps at 15 degrees. Material: casting - 356-T6 aluminum alloy.



\*Representative Image

#### Features

- Material: Casting - 356-T6 aluminum alloy
- Tee for connecting Aluminum Tubing main to two Aluminum Tubing tap at 15 degrees

#### General

EU RoHS Indicator	No
Material	Aluminum
Number of Ground Braid Lug	0
Holes	
Type	Weldment Tees
UPC	096359343486

#### Dimensions

Base Hole Spacing	0 in
Diameter - Base Holes	0 in
Diameter - Bolt	0 in
Diameter - Inside	0 in
Length - Coupling	0 in
Length Before Compression	0 in
Weight	2.548 lb

#### Electrical Ratings

Maximum Current Rating Amps 0  
Continuous

#### Conductor Related

Conductor Type Aluminum Bus

#### Product Assets

- [Catalogs - Substation Connectors \(SA\)](#)
- [Sales Drawings - C-1203 \(WTT215 Product Family\)](#)
- [Video - Hubbell Power Systems 3D Portal to help with developing 3D models of substation connector products](#)
- [Video - Hubbell Power Systems Quick Ship](#)



A Hubbell brand