

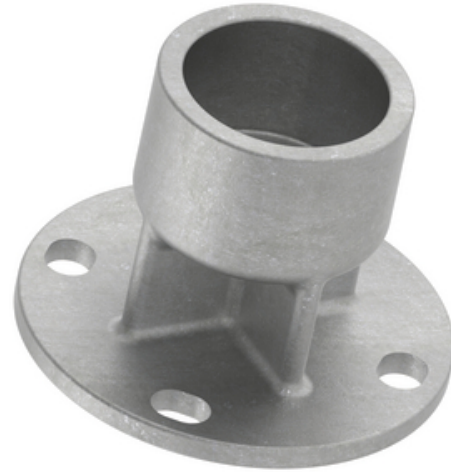
HUBBELL

Power Systems

Bus Support, Vertical, Aluminum Welded, Tube to Insulator

By ANDERSON
Catalog # [WUDE103](#)

Aluminum alloy, vertical weldment bus support for tubing. Cap screws are supplied for upright mounting. Material: castings - 356-T6 aluminum alloy, hardware - galvanized steel.



*Representative Image

Features

- For vertical deadending aluminum tubing
- Four Galv-Steel HH Bolts, lock washers and flat washers provided to mount to insulator cap.

General

EU RoHS Indicator	No
Material	Aluminum
Material - Mounting Hardware	Galvanized Steel
Number of Ground Braid Lug	0
Holes	
Type	Tube to Insulator
UPC	096359353621

Dimensions

Base Hole Spacing	0 in
Diameter - Base Holes	0 in
Diameter - Bolt	0 in
Diameter - Bolt Circle	3 in
Diameter - Inside	0 in
Length - Coupling	0 in
Length Before Compression	0 in
Weight	1.47 lb

Electrical Ratings

Maximum Current Rating Amps 0
Continuous

Conductor Related

Conductor Type Aluminum Bus

Product Assets

[Catalogs - Substation Connectors \(SA\)](#)
[Sales Drawings - C-5509 \(WUDE Product Family\)](#)
[Video - Hubbell Power Systems 3D Portal to help with developing 3D models of substation connector products](#)
[Video - Hubbell Power Systems Quick Ship](#)



A Hubbell brand