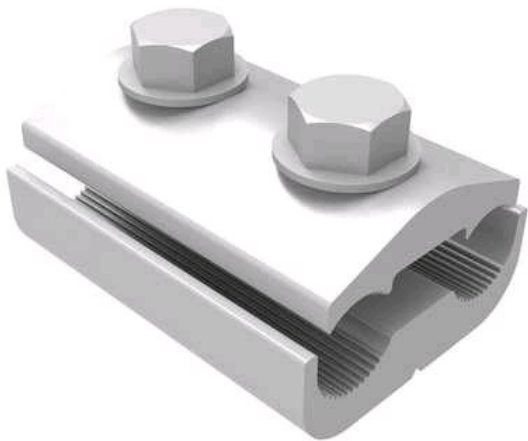


APR-397I

by CMC
Catalog ID: APR-397I



Aluminum parallel clamps (extruded), Dual-rated connectors for aluminum or copper conductors

- Pre-filled with CO-OX oxide inhibitor.
- Furnished with high-stress anodized bolts with integrated washers.
- Heavy-duty distribution connectors suitable for use over armor rod.

Product Details

General

Material	Aluminum
UPC	192663079117

Dimensions

Bolt Size	1/2 in
Length	1.687 in
Width	2.562 in

Conductor Related

Conductor - ACSR Str Run Range	3/0 - 397.5 ACSR;4 str - 2/0 str AR
Conductor - ACSR Str Tap Range	6 - 3/0 ACSR;6 str AR
Conductor - AL Str Run Range	3/0 str - 400 MCM
Conductor - AL Str Tap Range	6 sol - 3/0 str
Conductor - Copper Str Run Range	3/0 str - 400 MCM
Conductor - Copper Str Tap Range	6 sol - 3/0 str



CONNECTOR MANUFACTURING COMPANY
3501 Symmes Road
Hamilton, Ohio 45015 - 1369
513 - 860 - 4455(Press 2 for Customer Service and Sales)
To email customer Service: [jrex @cmclugs.com](mailto:jrex@cmclugs.com)

