

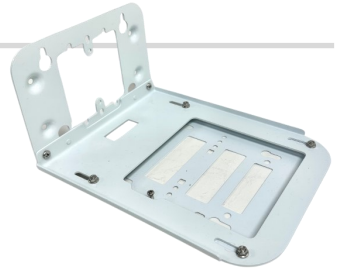


# UNIVERSAL AP L BRACKET WALL MOUNT - V2 ATS-03827 (ATS-APLBKT-UNIV1-V2)



## FEATURES

- The AccelTex Solutions AP L Bracket Mount V2 allows an AP to be mounted on a wall while maintaining the preferred horizontal orientation to the ground
- Easy installation of the AP using pre-defined mount keyholes
- Wire pass through been added for easier cable management
- Set screw has been added to secure Cisco and Mist APs
- Aruba mounting hole pattern makes the product compatible with newer Aruba APs



## BENEFITS

- Easy to install
- Versatile design
- Future proof-install a new compatible AP instantly



## MOUNT SHIPS WITH

M4 Drywall Screws with Anchors



## MECHANICAL SPECIFICATIONS

Dimensions: 4.72" x 6.92" x 9.53" (120mm x 175.89mm x 242mm)

Weight (without AP): 0.25 lb (0.1133981 kg)

Material: Steel

Color: White

Installation: Wall Mount

Equipment Installation: AP Mounting Feet onto included Mounting Bracket



## ENVIRONMENTAL SPECIFICATIONS

Installation Environment: Indoor

## WARRANTY

1 Year Limited Warranty



## COMPATIBILITY

For use with most enterprise APs