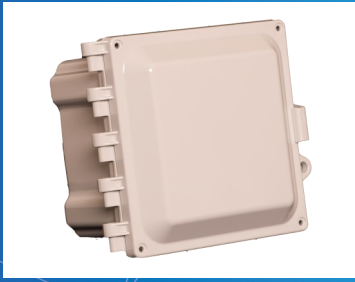




6X6X4 POLYCARBONATE ENCLOSURE WITH SOLID DOOR, LATCH LOCK AND CORD GRIP



The AccelTex Solutions polycarbonate enclosure protects any enterprise-class AP from environmental threats and tampering. Purpose built for enterprise applications, this aesthetically pleasing enclosure is inconspicuous in an indoor application and durable enough to provide NEMA 6P protection in an outdoor environment.

Part Number: ATS-664P-S-L-CG-BBP



MECHANICAL SPECIFICATIONS

Size: 6" H x 6" W x 4" D (154.2 mm H x 154.2 mm W x 101.6 mm D)
Weight: 2.5 lbs (1.13 kg)
Color: Light Grey
Material: Polycarbonate
Door Type: Solid
Lock Type: Latch with Integrated Pad Lockable Hasp
Antenna Connection Holes: 0
Hole Size: None
Cord Grip: Yes
Equipment Installation: Blank Backplate
Enclosure Installation: Mounting Feet



ENVIRONMENTAL SPECIFICATIONS

Installation Environment: Indoor/Outdoor
Environmental Protection: NEMA 6P, 4X, 4, 3R, 122; IP68
Operating Temperature: -20 to 240°F (-28 to 115°C)

WARRANTY



2 Year Limited Warranty