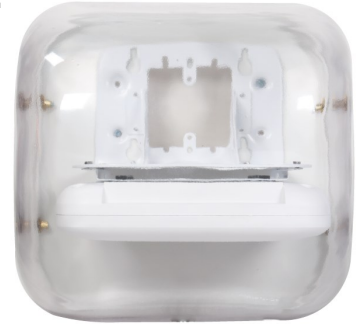




FEATURES

- Powder-coated steel bracket
- Universal mount with pre-defined mounting holes for most enterprise-level access points
- T-bar mounting plate
- Clear PETG plastic cover
- Gang-box mounting hole pattern
- 2 Ventilation caps



BENEFITS

- Allows for an AP to be mounted on a wall while maintaining the preferred horizontal orientation to the ground
- Easy installation of the AP using the pre-defined mount keyholes or the T-bar mounting plate
- Cover protects the AP from bumps, falls, or collisions - preventing unexpected network downtime
- Clear cover allows for quick visual inspection of the AP status, simplifying troubleshooting and maintenance tasks
- Ventilation caps are provided to increase airflow and effectively dissipate heat generated by your Wi-Fi APs



MOUNT SHIPS WITH

- Clear plastic cover
- Universal AP L-Bracket Wall Mount
- Mounting hardware



MECHANICAL SPECIFICATIONS

Dimensions: 11.5" L x 11.30" W x 11.30" H (283.11 x 287.02 x 287.02mm)

Weight (without AP): 3 lbs. (1.36 kg)

Material: Steel mount, ABS plastic mounting bezel, PETG plastic cover

Color: White mount and bezel, Clear cover

Installation: Wall Mount, Gang-box compatible

Equipment Installation: AP mounting feet onto included mounting bracket



ENVIRONMENTAL SPECIFICATIONS

Installation Environment: Indoor

WARRANTY

1 Year Limited Warranty



COMPATIBLE APs

Aruba/HP AP-315, Aruba/HP AP-505, Aruba/HP AP-515, Cisco 3802i, Cisco Catalyst 9115i, Cisco Catalyst 9117, Cisco Catalyst 9120i, Cisco Meraki MR36, Cisco Meraki CW9162, Cisco Meraki CW9164, Cisco Meraki CW9166, Cisco Meraki MR57, Extreme AP 245X, Extreme AP1130, Mist AP32E, Mist AP33, Mist AP41, Mist AP43, Mist AP45, Mist BT11