



## ELECTRICAL SPECIFICATIONS

### GPS Antenna

Frequency Range: 1575.42-1610 MHz  
Gain: 25 dB  
Polarization: Right Hand Circular  
Noise Figure: <1.5 dB

VSWR:  $\leq 2.0$   
Impedance: 50  $\Omega$   
Supply Voltage: 3-5V DC  
Current Consumption: < 15 mA

### Cellular (LTE and 5G)

Frequency Range: 698-960/1575.42-1610/1710-2690/3300-4200 MHz  
VSWR:  $\leq 3.0$   
Gain: 3 dBi  
Impedance: 50  $\Omega$   
Polarization: Linear



## MECHANICAL SPECIFICATIONS

Dimensions: 5.1" Dia x 2.6" H (130mm Dia x 65mm H)  
Weight: 1.25 lb (0.57 kg)  
Installation: Threaded Bolt with Nut  
Cable Type: ATS-100

Radome Material: ABS  
Connector: 5 SMA (1 GPS & 4 LTE)  
Number of Leads: 5  
Cable Length: 18"

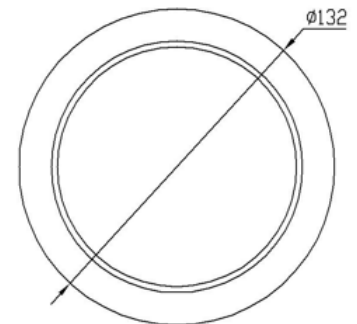
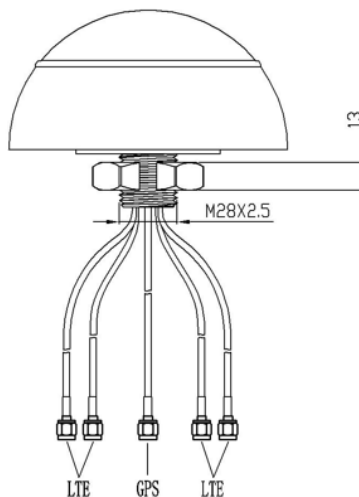
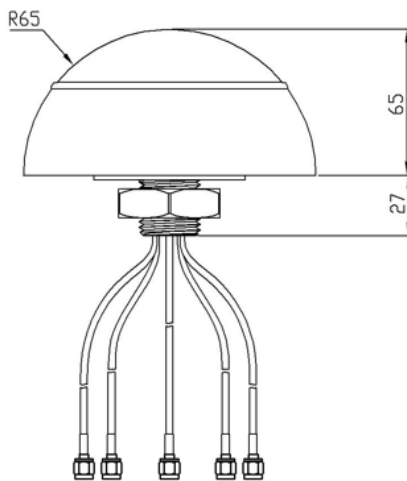


## ENVIRONMENTAL SPECIFICATIONS

Installation Environment: Outdoor  
Operating Temperature: -40 to 185°F (-40 to 85°C)  
IP Rating: IP66

## WARRANTY

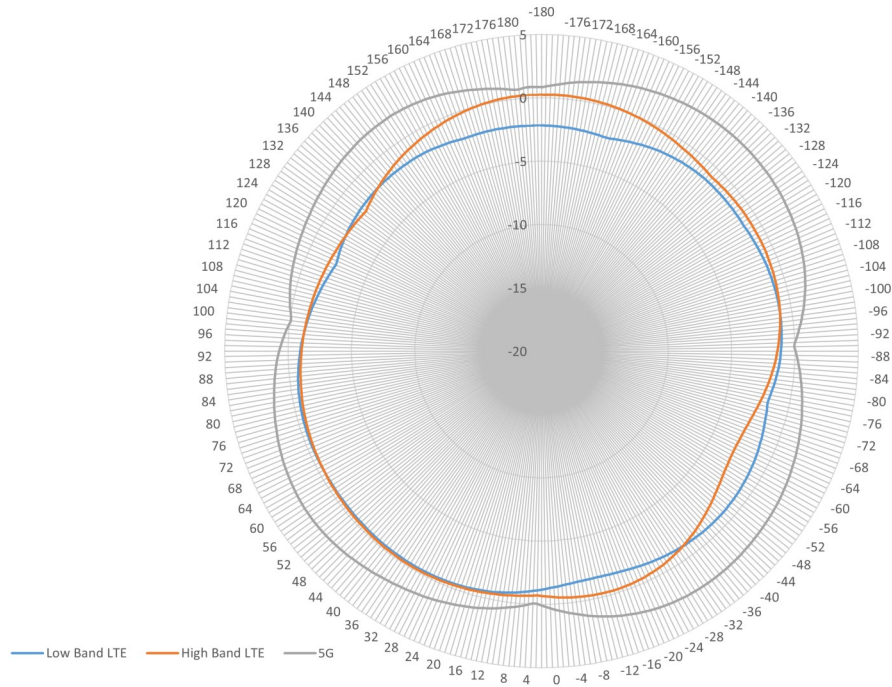
2 Year Limited Warranty





## CELLULAR (LTE AND 5G)

Horizontal



Vertical

