

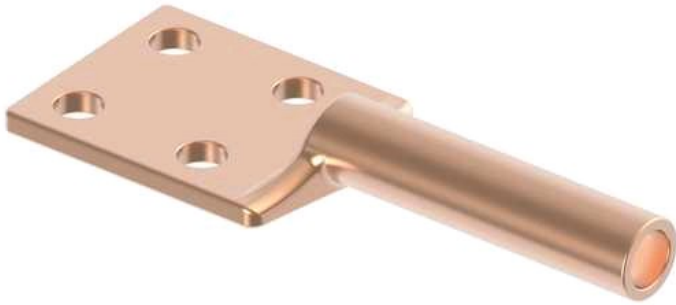


# Terminal, Copper Compression

by ANDERSON  
Catalog ID: BCL075C

Terminal, Copper Compression, Cable to Flat, cable range 0.998-0.998  
pad: 4 hole, 3 in. TERMINAL, COMP .998 DIA TO C PAD

- 90° pad orientation available, 45° pad orientation available



\* Representative image

## Product Details

### General

|                                  |                         |
|----------------------------------|-------------------------|
| Material                         | Copper                  |
| Number of Bolt Holes             | 4                       |
| Number of Ground Braid Lug Holes | 0                       |
| Number of Pad Holes              | 4                       |
| Type                             | Bolted Lugs & Terminals |
| UPC                              | 096359291459            |

### Dimensions

|                           |          |
|---------------------------|----------|
| Angle - Pad               | 180 °    |
| Base Hole Spacing         | 0 in     |
| Diameter - Base Holes     | 0 in     |
| Diameter - Bolt           | 0 in     |
| Diameter - Inside         | 0 in     |
| Length - Coupling         | 0 in     |
| Length Before Compression | 0 in     |
| Weight                    | 5.488 lb |
| Width - Pad               | 3 in     |

### Electrical Ratings

|  |   |
|--|---|
| Maximum Current Rating Amps Continuous | 0 |
|--|---|

### Conductor Related

|                              |               |
|------------------------------|---------------|
| Conductor Diameter - Maximum | 0.998 in      |
| Conductor Diameter - Minimum | 0.998 in      |
| Conductor Diameter Range     | 0.998 - 0.998 |

**For further technical assistance, please contact us**

**Domestic Customer Service**

Hubbell Power Systems  
210 N. Allen Centralia, MO 65240 USA  
Phone: (573) 682-5521  
Fax: (573) 682-8475  
Email: [hpscsc@hubbell.com](mailto:hpscsc@hubbell.com)

**International Customer Service**

Phone: +1-573-682-5521  
Fax: +1-573-682-8516  
Email: [hpsintlcs@hubbell.com](mailto:hpsintlcs@hubbell.com)