

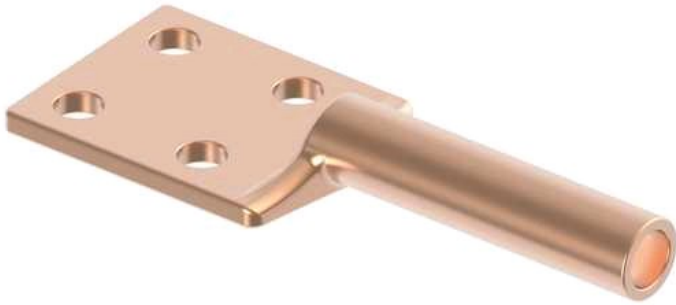


Terminal, Copper Compression

by ANDERSON
Catalog ID: BCL075D

Terminal, Copper Compression, Cable to Flat, cable range 0.998-0.998
pad: 4 hole, 4 in. TERMINAL, COMP .998 DIA TO D PAD

- 90° pad orientation available, 45° pad orientation available



* Representative image

Product Details

General

Material	Copper
Number of Bolt Holes	4
Number of Ground Braid Lug Holes	0
Number of Pad Holes	4
Type	Bolted Lugs & Terminals
UPC	096359291466

Dimensions

Angle - Pad	180 °
Base Hole Spacing	0 in
Diameter - Base Holes	0 in
Diameter - Bolt	0 in
Diameter - Inside	0 in
Length - Coupling	0 in
Length Before Compression	0 in
Weight	6.076 lb
Width - Pad	4 in

Electrical Ratings

Maximum Current Rating Amps Continuous	0
--	---

Conductor Related

Conductor Diameter - Maximum	0.998 in
Conductor Diameter - Minimum	0.998 in
Conductor Diameter Range	0.998 - 0.998

For further technical assistance, please contact us

Domestic Customer Service

Hubbell Power Systems
210 N. Allen Centralia, MO 65240 USA
Phone: (573) 682-5521
Fax: (573) 682-8475
Email: hpscsc@hubbell.com

International Customer Service

Phone: +1-573-682-5521
Fax: +1-573-682-8516
Email: hpsintlcs@hubbell.com