

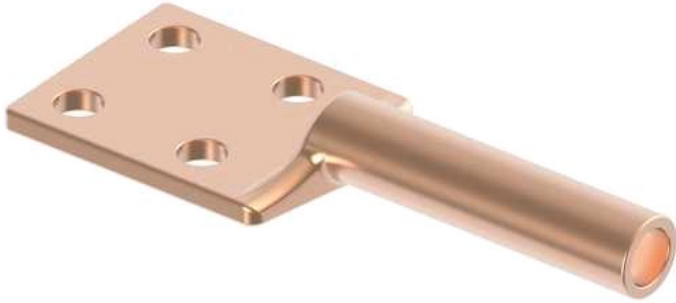


# Terminal, Copper Compression

by ANDERSON  
Catalog ID: BCL150C

Terminal, Copper Compression, Cable to Flat, cable range 1.412-1.412 pad: 4 hole, 3 in. TERMINAL, COMP 1.412 DIA TO C PAD

- 90° pad orientation available, 45° pad orientation available



\* Representative image

## Product Details

### General

Material	Copper
Number of Bolt Holes	4
Number of Ground Braid Lug Holes	0
Number of Pad Holes	4
Type	Bolted Lugs & Terminals
UPC	096359349150

### Dimensions

Angle - Pad	180 °
Base Hole Spacing	0 in
Diameter - Base Holes	0 in
Diameter - Bolt	0 in
Diameter - Inside	0 in
Length - Coupling	0 in
Length Before Compression	0 in
Weight	12.152 lb
Width - Pad	3 in

### Electrical Ratings

Maximum Current Rating Amps Continuous	0
--	---

### Conductor Related

Conductor Diameter - Maximum	1.412 in
Conductor Diameter - Minimum	1.412 in
Conductor Diameter Range	1.412 - 1.412

**For further technical assistance, please contact us**

**Domestic Customer Service**

Hubbell Power Systems  
210 N. Allen Centralia, MO 65240 USA  
Phone: (573) 682-5521  
Fax: (573) 682-8475  
Email: [hpscsc@hubbell.com](mailto:hpscsc@hubbell.com)

**International Customer Service**

Phone: +1-573-682-5521  
Fax: +1-573-682-8516  
Email: [hpsintlcs@hubbell.com](mailto:hpsintlcs@hubbell.com)