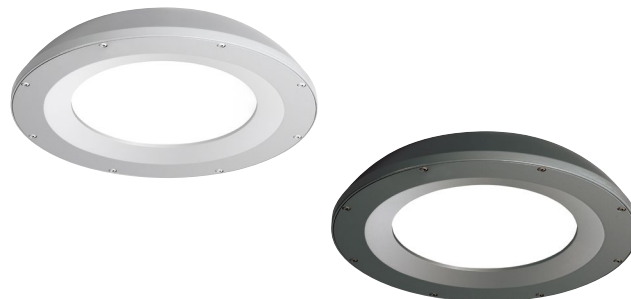


# SRT1 EDGE-LIT

CEILING/SURFACE/GARAGE



## FEATURES

- For ceiling mount and parking garage applications from an 8–15 foot mounting height
- Edge-lit flat lens for optimal visual comfort and uniformity across the lens
- Two optical distributions specifically design for parking garage and canopy applications are available making the Beacon Edge-Lit luminaire both versatile and functional
- UL/cUL listed for we locations, IP65 and 3G vibration rated
- Occupancy sensor available for complete on/off and dimming operation

## RELATED PRODUCTS

- [Ø Drive Edge-Lit SRT2](#)
[Ø Orbeon](#)
[Ø Viper Small](#)

## SPECIFICATIONS

### HOUSING

- Die-cast aluminum housing ensures long electrical component life and luminaire performance
- Corrosion resistant powder coat finish both protects and provides architectural appearance
- One piece molded silicone gasket ensures weather proof seal
- Thermally isolated driver mounted to dedicated bracket reduces operating temperatures and increases driver life and reliability

### OPTICS

- Edge-lit acrylic light guide provides blended non-pixelated light for unprecedented visual comfort
- Choice of multiple light outputs with lumen range of 2500–6000
- Two distribution types: Type 5 Square Wide, Type 5 Concentrated
- Wide variety of CCT's and CRI's offered: 3000K (70CRI), 3000K (80CRI), 3500K (80CRI), 4000K (70CRI), 4000K (80CRI) or 5000K (70 CRI) CCT

### ELECTRICAL

- 120V–277V 50/60Hz available
- 0–10V dimming drivers are RoHS compliant
- Surge protection – Standard 10kA with optional end of life LED indicator

### INSTALLATION

- Standard quick mount plate over standard 4" junction box or octagonal junction box and allows for simplified fixture installation.
- Standard luminaire accepts a rigid or free-swinging 3/4" NPT stem for pendant mounting via wet location j-box (by others)
- Optional bird deterrent shroud available for field installation

### OPTIONS/CONTROLS

- Standalone occupancy sensor available for on/off or dimming operation
- Uplight option provides approximately 800 lumens and consumes only 8 additional watts
- Vandal resistant wire guard available as an option for factory installation or as an accessory for field installation.

### CERTIFICATIONS

- Listed to UL1598 for use in wet location, listed for -40°C to 40°C applications
- IDA approved with zero uplight for 3000K and warmer CCTs
- IP65

### WARRANTY

- 5 year warranty
- See [HLI Standard Warranty](#) for additional information

KEY DATA	
Lumen Range	2500–6000
Wattage Range	20–55
Efficacy Range (LPW)	99–118
Reported Life (Hours)	L70>60K
Weight lbs. (kg)	8 (3.6)

# SRT1 EDGE-LIT

CEILING/SURFACE/GARAGE

## ORDERING GUIDE

**Example:** SRT1-35-3K7-5QW-UNV-BL-WG

 CATALOG # 

Series	Engine	CCT	Distribution	Voltage	Color/Finish	Options
SRT1 Edge-Lit Parking Garage Size 1	<b>20</b> 20W Nominal 2500 lm	<b>3K7</b> 3000K, 70 CRI <b>3K8</b> 3000K, 80 CRI	<b>5QW</b> Type 5 Square Wide  <b>5C</b> Type 5 Concentrated	<b>UNV</b> 120V- 277V	<b>BL</b> Textured Black <b>DB</b> Textured Dark Bronze <b>GT</b> Graphite Textured <b>GYS</b> Smooth Gray <b>PS</b> Smooth Plat. Silver <b>WH</b> Textured White <b>CC</b> Custom Color	<b>WG</b> Wire Guard <b>UD<sup>3</sup></b> Uplight Module <b>F<sup>1</sup></b> Single Fuse (120, 277) <b>LD3<sup>2</sup></b> 36" Lead Length <b>LD6<sup>2</sup></b> 72" Lead Length <b>LD9<sup>2</sup></b> 108" Lead Length <b>SP10K<sup>3</sup></b> 10kA Surge Protection with End of Life LED Indicator <b>LMB</b> Less Mounting Bracket
	<b>35</b> 35W Nominal 4000 lm	<b>35K7</b> 3500K, 80 CRI <b>4K7</b> 4000K, 70 CRI <b>4K8</b> 4000K, 80 CRI		<b>120</b> 120V		
	<b>55</b> 55W Nominal 6000 lm	<b>5K7</b> 5000K, 70 CRI		<b>208</b> 208V <b>240</b> 240V <b>277</b> 277V		

### Control Options

**NX Standalone**
**NXOS12F** NX Distributed Intelligence™, PIR Occ. Sensor, Dimming Daylight Harvesting, up to 12' MH

**Sensor Controls**
**SCP-8F** Remote control programmable line voltage sensor (8-12' recommended mounting height)

**SCP-20F** Remote control programmable line voltage sensor (12-20' recommended mounting height)

## Notes:

- 1 Must specify voltage
- 2 Standard wire lead length 24"
- 3 SP10K LED indicator not available with uplight

### Accessories (Order Separately)

- SRT1-WG** Wire Guard
- SRT-MB** Mounting bracket for pre-installation
- SRT1-BRD** Bird deterrent shroud for SRT1 version, not available with uplight
- SCP-REMOTE** Remote control for SCP option; order at least on per project to program and control

## PERFORMANCE DATA

Nominal Watts	Nominal Lumens	Distribution	5K (5000K NOMINAL 70 CRI)					4K (4000K NOMINAL 70 CRI)					3K (3000K NOMINAL 70 CRI)				
			Lumens	LPW	B	U	G	Lumens	LPW	B	U	G	Lumens	LPW	B	U	G
20	2500	5QW	2446	113	1	0	1	2434	113	1	0	1	2312	107	1	0	1
		5C	2539	118	1	0	1	2527	117	1	0	1	2400	111	1	0	1
35	4000	5QW	3783	109	2	0	1	3769	109	2	0	1	3578	103	2	0	1
		5C	3929	114	2	0	1	3913	113	2	0	1	3714	107	2	0	1
55	6000	5QW	5726	104	3	0	1	5698	104	3	0	1	5413	99	3	0	1
		5C	5945	108	2	0	1	5915	108	2	0	1	5619	102	2	0	1

## ELECTRICAL DATA

Nominal Watts	System Watts	Line Voltage		AMPS AC				Dimming Range	Absolute Voltage Range on 0-10V (+)	
		VAC	HZ	120	208	240	277		VAC	HZ
20	21.6	120-277	50/60	0.18	0.10	0.09	0.08	10% to 100%	0V	10V
35	34.6	120-278	50/61	0.29	0.17	0.14	0.12	10% to 100%	0V	10V
55	54.9	120-279	50/62	0.46	0.26	0.23	0.20	10% to 100%	0V	10V

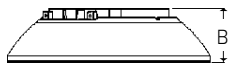
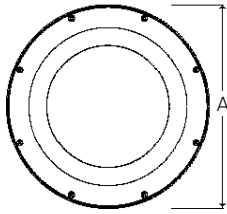
# SRT1 EDGE-LIT

CEILING/SURFACE/GARAGE

## PROJECTED LUMEN MAINTENANCE

TM-21 Lifetime Calculations - Projected Lumen Maintenance (25°C/77°F)							
Hours	0	25,000	36,000	50,000	100,000	Reported L70	Calculated L70
Project Lumen Maintenance	100%	0.97	0.94	0.93	0.88	> 60,000	> 262,000

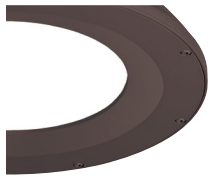
## DIMENSIONS



A	B	Weight
12" (304mm)	3.1" (78mm)	8lbs (3.6kg)

## ADDITIONAL INFORMATION

### FINISH OPTIONS



**DB** Dark Bronze Textured



**BL** Black Textured



**PS** Platinum Silver Smooth



**GYS** Gray Smooth



**WH** White Textured



**GT** Graphite Textured

## ACCESSORIES AND SERVICES



Wire Guard

An optional wire guard can be specified at the factory or as an accessory for field installation.



Bird Deterrent

An optional bird shroud deterrent can be specified at the factory or as an accessory for field installation.

# SRT1 EDGE-LIT

CEILING/SURFACE/GARAGE

## ADDITIONAL INFORMATION (CONT'D)

### MOUNTING



Surface Mount

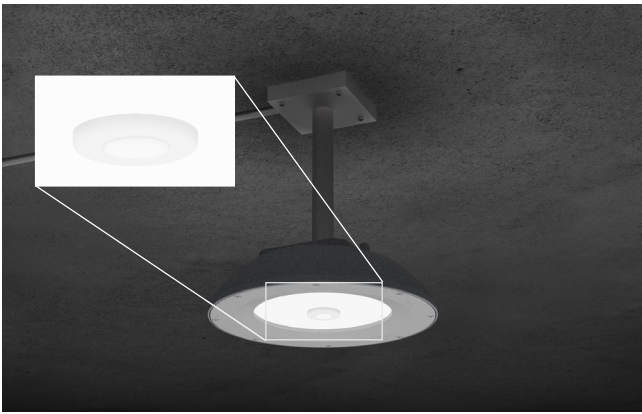
Mounting plate with "quick mount" hanger for one person simple installation.



Pendant Mount

Standard 3/4" threaded entry for pendant applications.

### CONTROLS



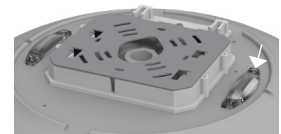
Standalone Controls

Optional passive infrared sensors are available for basic occupancy and daylight sensing. Programmable via remote or Bluetooth® phone app.

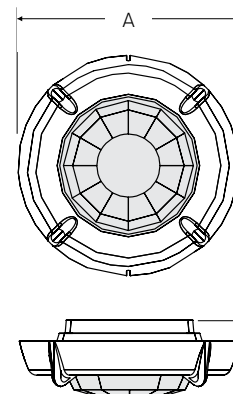
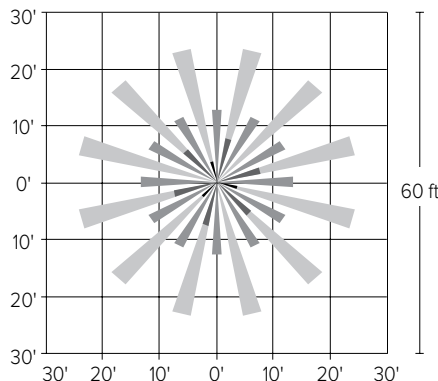
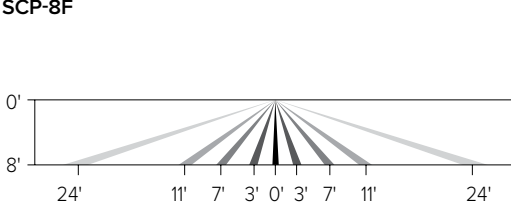


Uplight

Optional uplight module provides 800 lumens of indirect illumination for improved visual quality while eliminating cave effect.



### SCP-8F



A	B
2.3" (59mm)	.8" (20mm)

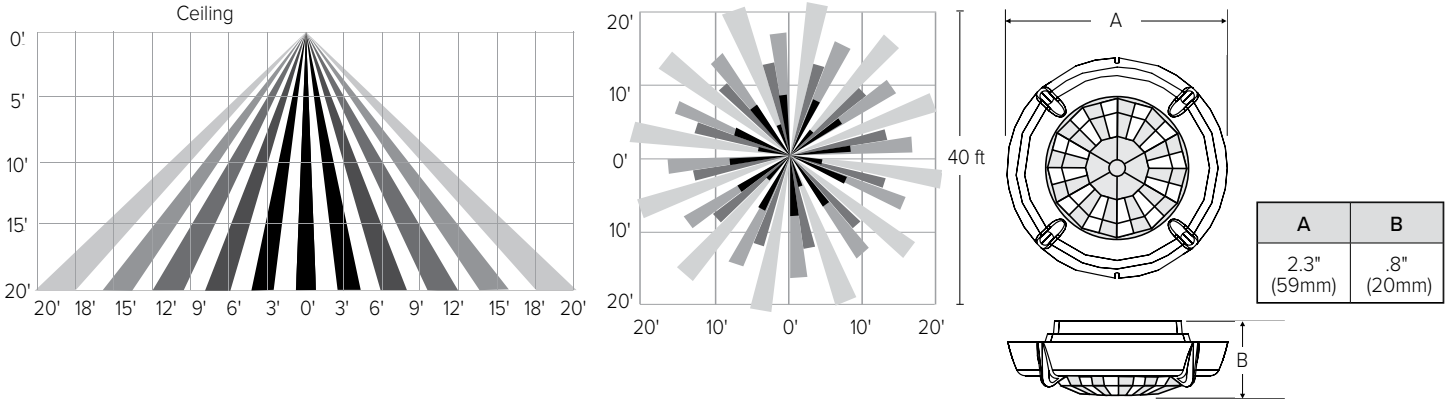
# SRT1 EDGE-LIT

CEILING/SURFACE/GARAGE

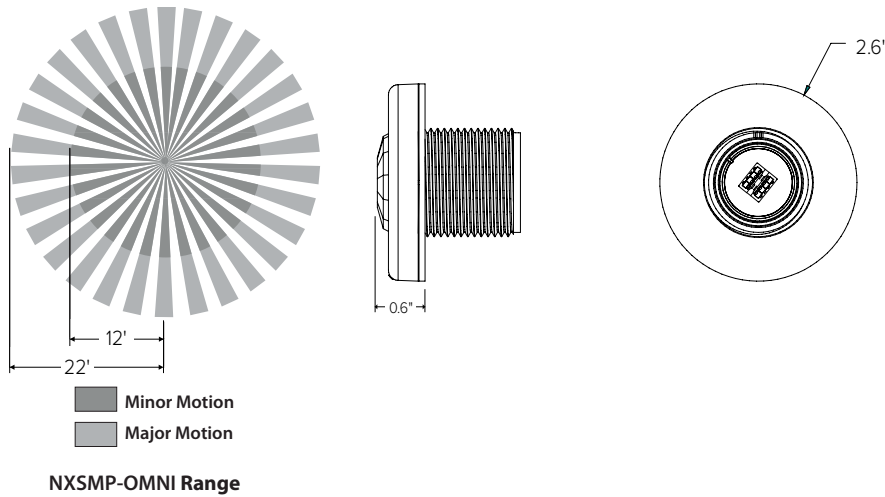
## ADDITIONAL INFORMATION (CONT'D)

### CONTROLS (CONT'D)

#### SCP-20F



#### NXOS12F



## USE OF TRADEMARKS AND TRADE NAMES

All product and company names, logos and product identifies are trademarks™ or registered trademarks® of Hubbell Lighting, Inc. or their respective owners. Use of them does not necessarily imply any affiliation with or endorsement by such respective owners.